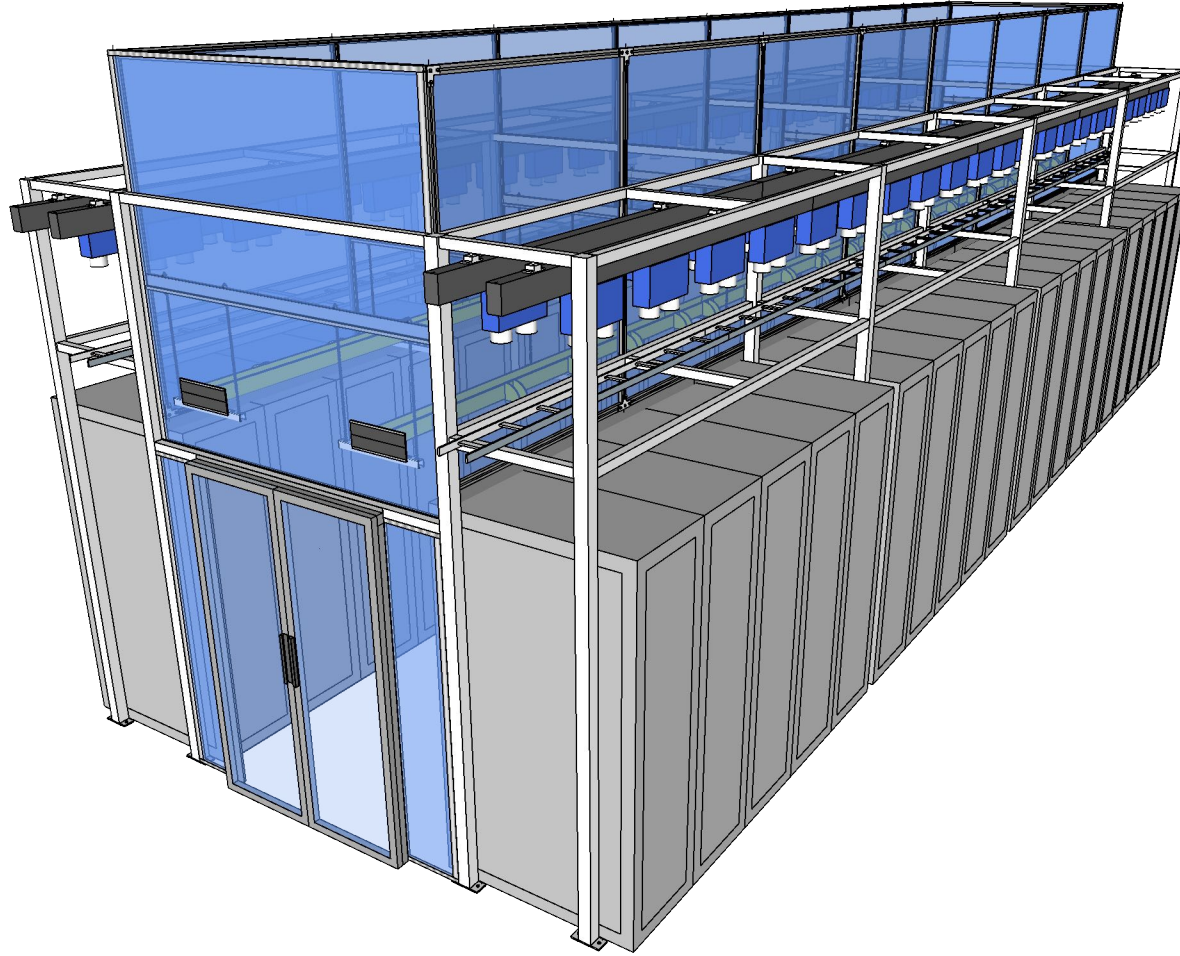


**FLEXRAIL™ FMI
FLOOR MOUNTED INFRASTRUCTURE**



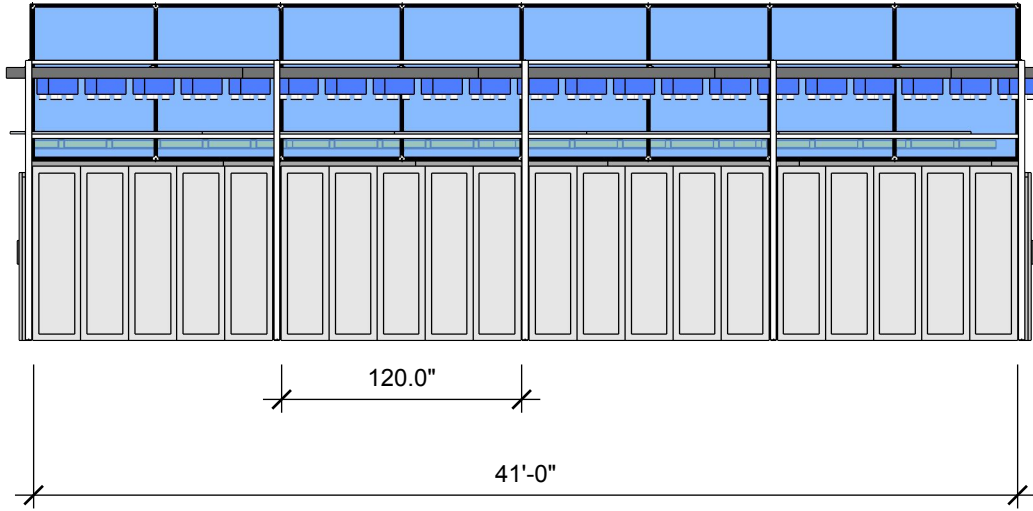
LAST MODIFIED
March 26, 2021

BY
CF

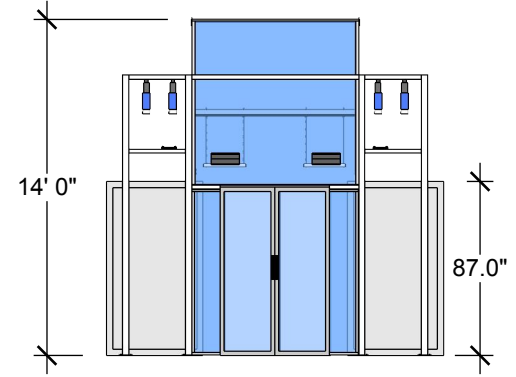
COMPANY
Polargy
Sunnyvale, CA

TITLE
**FlexRail FMI
Floor Mounted
Infrastructure**

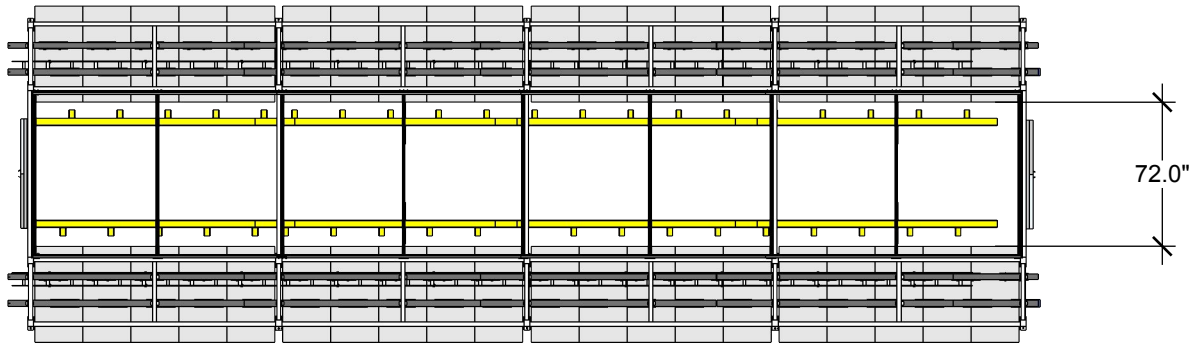
SIDE



FRONT



TOP



AISLE WIDTH

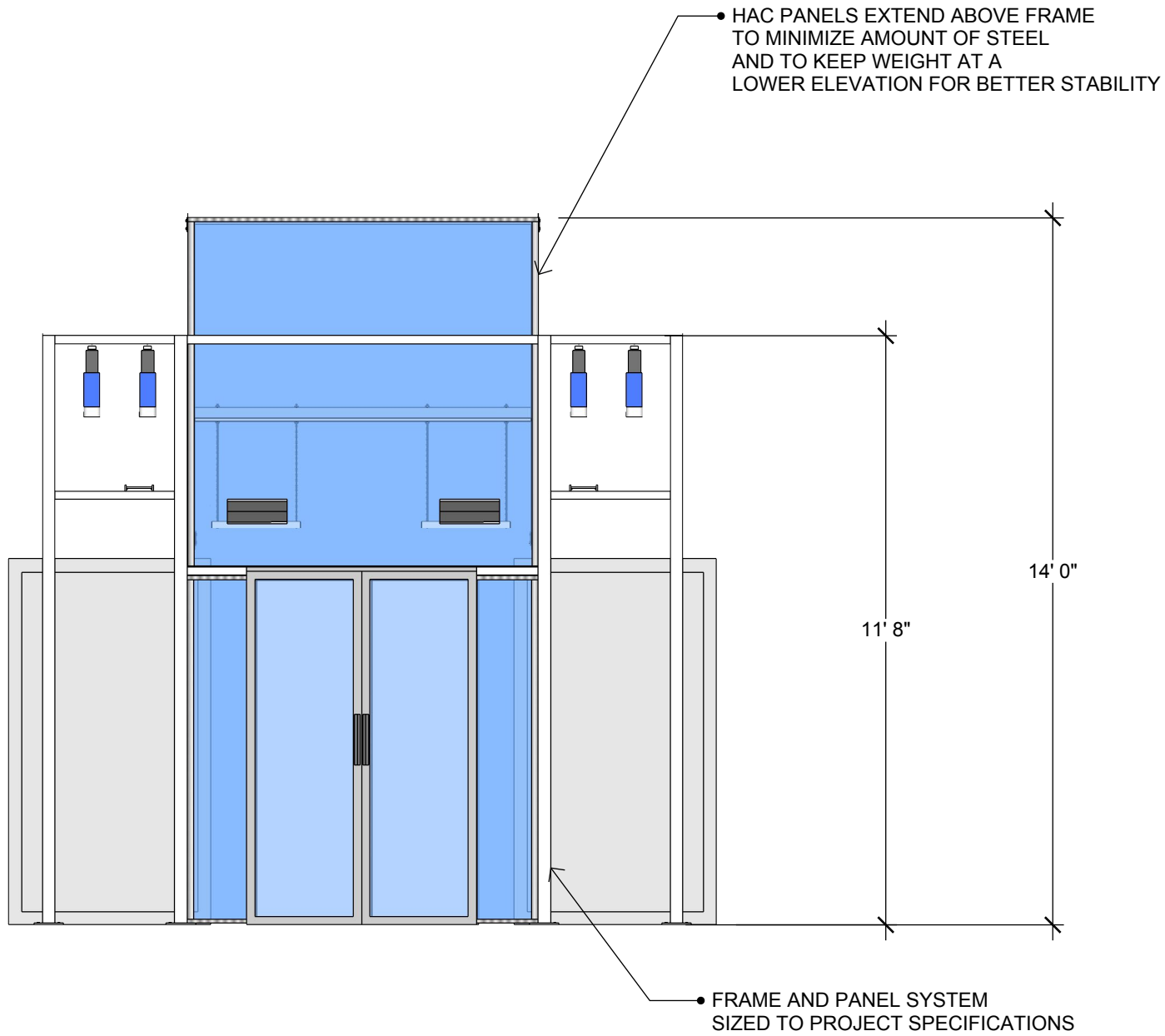


LAST MODIFIED
March 26, 2021

BY
CF

COMPANY
Polargy
Sunnyvale, CA

TITLE
**FlexRail FMI
Floor Mounted
Infrastructure**

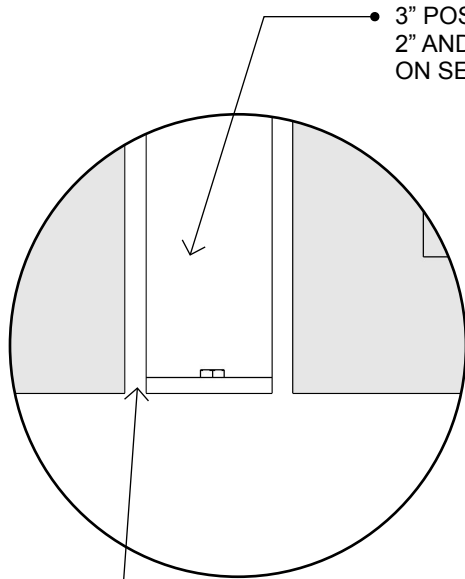
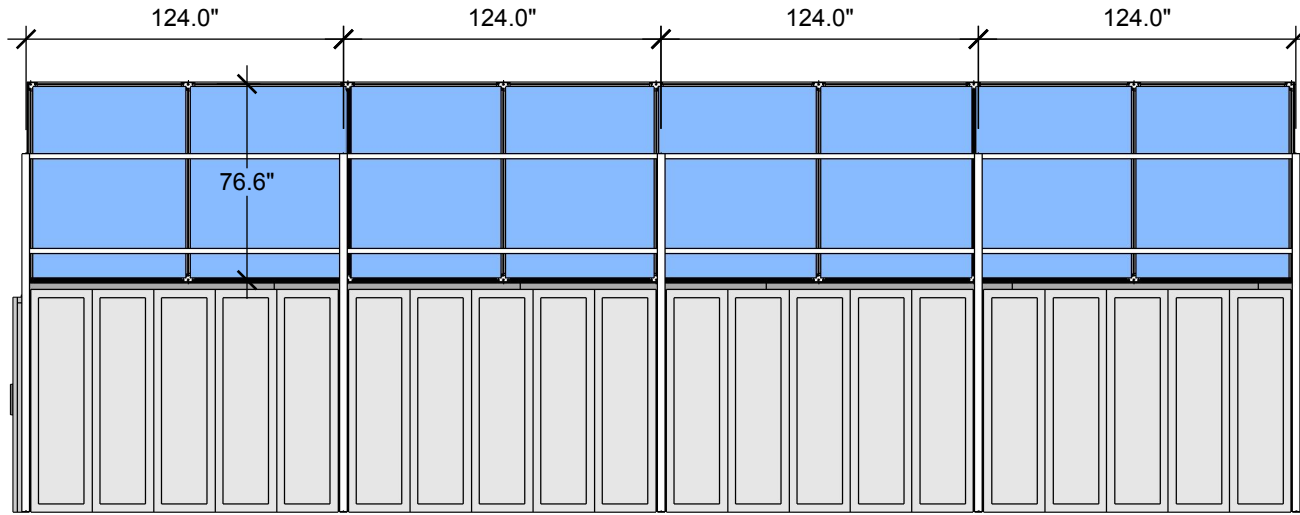


LAST MODIFIED
March 26, 2021

BY
CF

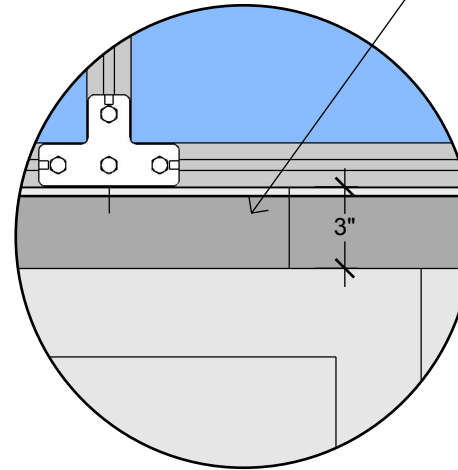
COMPANY
Polargy
Sunnyvale, CA

TITLE
**FlexRail FMI
Floor Mounted
Infrastructure**



.5" GAP EACH SIDE OF POST

3" POST TYPICAL
2" AND 4" POSTS USED DEPENDING
ON SEISMIC ZONES AND LOADS



BRUSH LENGTHS
3", 4" AND 6"



LAST MODIFIED
March 26, 2021

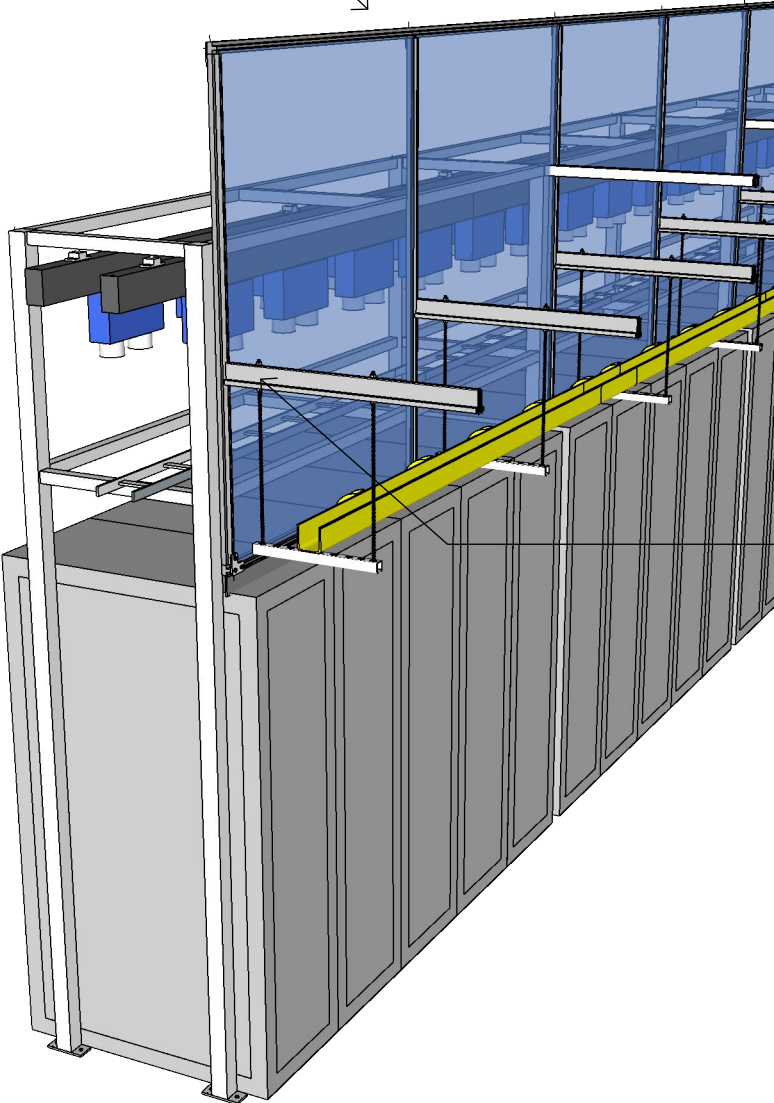
BY
CF

COMPANY
Polargy
Sunnyvale, CA

TITLE
**FlexRail FMI
Floor Mounted
Infrastructure**

INSIDE VIEW

FLEXRAIL PANELS INSTALLED
FLUSH TO CEILING SO VARIATION
IN FLOOR AND CEILING ELEVATIONS
IS ABSORBED BY BRUSH



ELEVATION OF CROSS
BARS ADJUSTABLE
ALONG ENTIRE HEIGHT



POLARGY

LAST MODIFIED
March 26, 2021

BY
CF

COMPANY
Polargy
Sunnyvale, CA

TITLE
**FlexRail FMI
Floor Mounted
Infrastructure**

DOOR OPTIONS



● PRE-ASSEMBLED SWING DOOR

● PRE-ASSEMBLED SLIDING DOOR



POLARGY

LAST MODIFIED
March 26, 2021

BY
CF

COMPANY
Polargy
Sunnyvale, CA

TITLE
**FlexRail FMI
Floor Mounted
Infrastructure**