

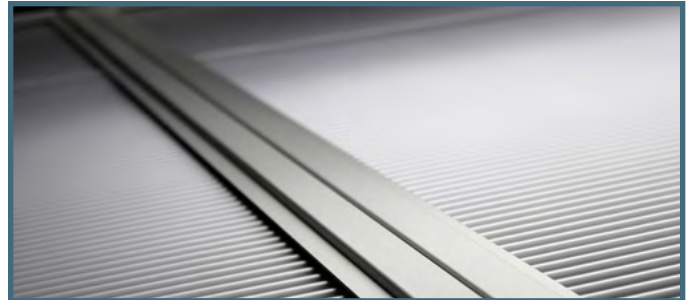


PolarPlex™ Drop-Away Panels

256 Gibraltar Drive, Suite 106
Sunnyvale, CA 94089
888.816.8338
www.polargy.com

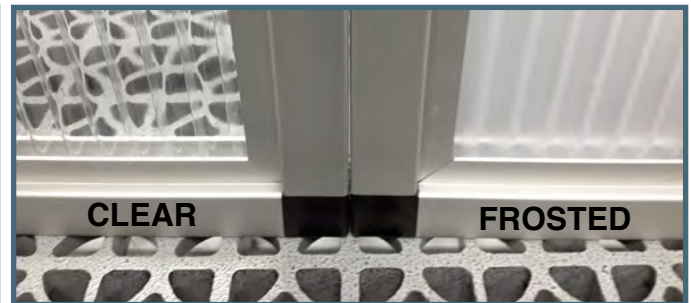
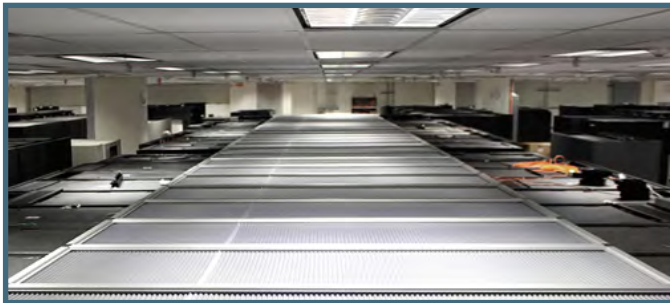
PolarPlex™ Drop-Away Panel

The PolarPlex™ Drop-Away Panel is a unique hot and cold aisle containment solution that solves the "sprinkler head obstruction" problem commonly associated with deploying overhead containment. The UL-listed panel insert is engineered to activate at high temperature and drop out of the frame in a fire, allowing fire suppression systems to operate normally. The insert material comes both clear or frosted to allow light to pass through the panels into the aisle, eliminating the need for supplemental lighting.



Lightweight and Transparent

Each 2' x 4' PolarPlex™ Drop-Away Panel weighs only 6.8 lbs, making them easy to handle and install. Panels are constructed of anodized aluminum frames with special heat sensitive inserts. Inserts are available clear and frosted, both allow plenty of light into the aisles.

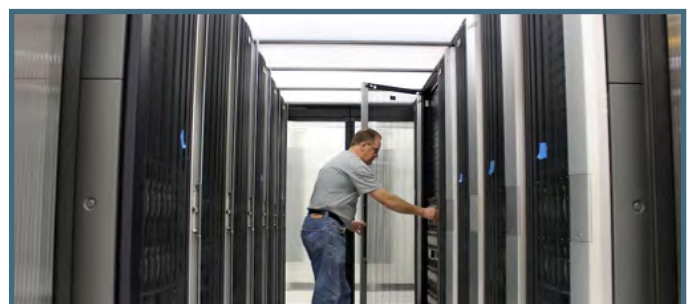
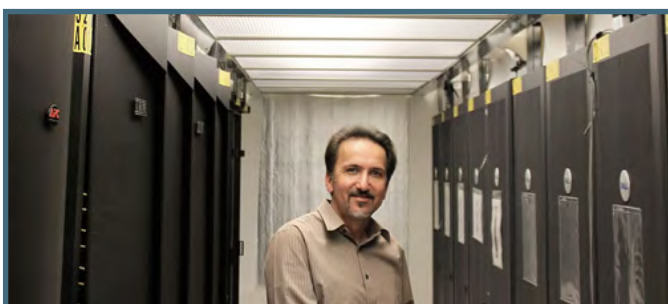


Standard and Custom Sizes

4' aisle: 24" wide x 52" long

6' aisle: 24" wide x 76" long

Custom sizes available, up to 24" wide and 10' long.





PolarPlex™ Drop-Away Panels

256 Gibraltar Drive, Suite 106
Sunnyvale, CA 94089
888.816.8338
www.polargy.com

PolarPlex Drop-Away Panel Specifications

Materials

Frame

Material	Natural or black anodized aluminum
Cross section	1" x 1" square

Insert

Material 0.013" polyvinyl chloride plastic

Fire Safety ASTM Class A
UL-Listed

Panels activate at 135°F and may be installed under fire suppression sprinkler systems with an activation temperature of 165°F, in a manner acceptable, and subject to the authorities having jurisdiction.

Always review a proposed application of PolarPlex Drop-Away Panels with local authorities before installation.

Opacity Frosted (20% opaque, 80% light transmittance)
Clear (10% opaque, 90% light transmittance)

Assembled Panel

Dimensions Standard 4 Foot Aisle Size: 24"W x 52"L
Standard 6 Foot Aisle Size: 24"W x 76"L
Custom: Variable Height x Variable Width

Weight 2' x 4' Panel weighs 6.8 lbs