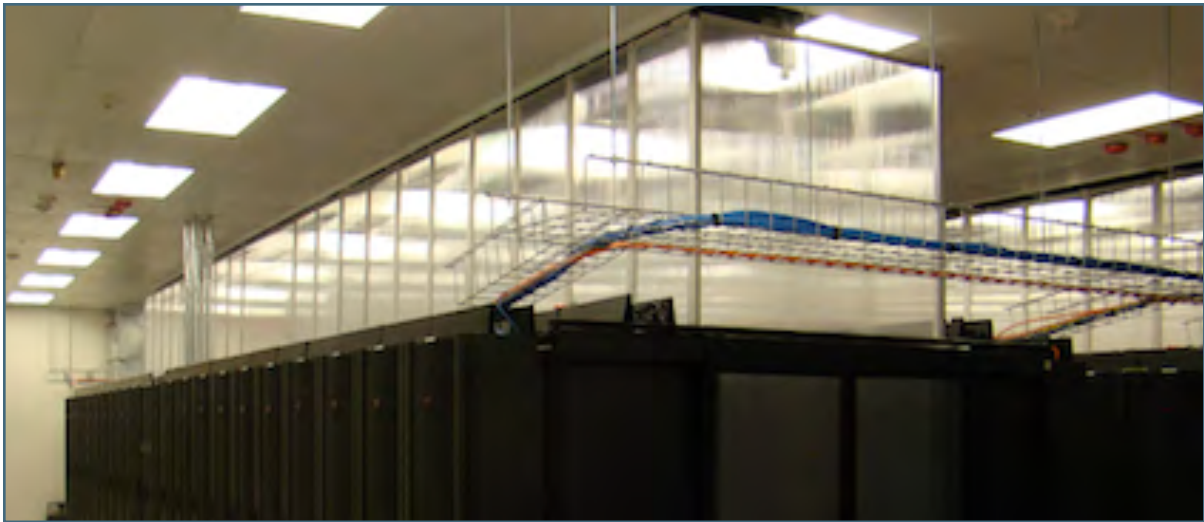


# PolarPlex™ Standard Panel

## Brochure

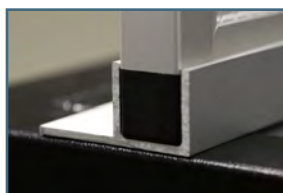
### **PolarPlex™ Standard Containment Panels**

Polargy's PolarPlex™ Standard Panels are a clean, tight fitting containment solution for either hot or cold aisle containment. The Standard Panels are a preferred product for new data centers deploying hot aisle containment.



### **Lightweight and Flexible**

The Containment Systems are lightweight, durable, and easy to handle. The panels are constructed of clear fire safe inserts secured with rigid aluminum tube framing. Panels are built to suit the specific site, or standard sizes can be ordered. Panels are secured to rack tops with the PolarPlex™ Mounting Bracket which provides quick install and quick removal.



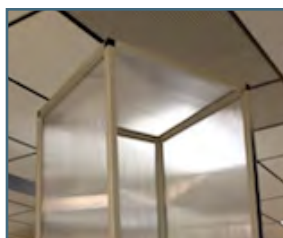
PolarPlex Mounting Bracket

### **Simple Mounting System**

The Standard Containment Panels are mounted to rack tops or to supporting Unistrut with the PolarPlex™ Mounting Brackets. These one eared brackets are simple to install and the panels just slide into the channel where they are held tightly in place.

### **Self Standing**

Self Standing Panels are ideal for gaps between racks. Standard 24" x 80" and 24" x 84" sizes are available. Our Self Standing Panels are also built to custom heights and widths.



Containment Stall

### **Containment Stall**

Self Standing Containment Stalls are used to isolate stand alone racks or groups of racks when the ceilings are high or when there is no other convenient structure from which to attach the containment systems. They are light enough to slide back and forth for gaining access to the rack.

# PolarPlex™ Standard Panel

## Brochure

### PolarPlex™ Standard Panels Specifications

#### Materials

#### Aluminum Frame

Material	Clear, anodized aluminum Black anodized aluminum optional
----------	--

Frame Profile	1" x 1"
---------------	---------

#### Twin Wall Insert

Material	Polycarbonate
----------	---------------

Fire Safety	ASTM Class A
-------------	--------------

Color	Clear
-------	-------

#### Overall Panels

Panel Dimensions	Variable Height, Variable Width
------------------	---------------------------------

Panel Weight	2' x 4' Panel weighs 8.5 lbs
--------------	------------------------------



Floor Mounting



Rack Top Mounting