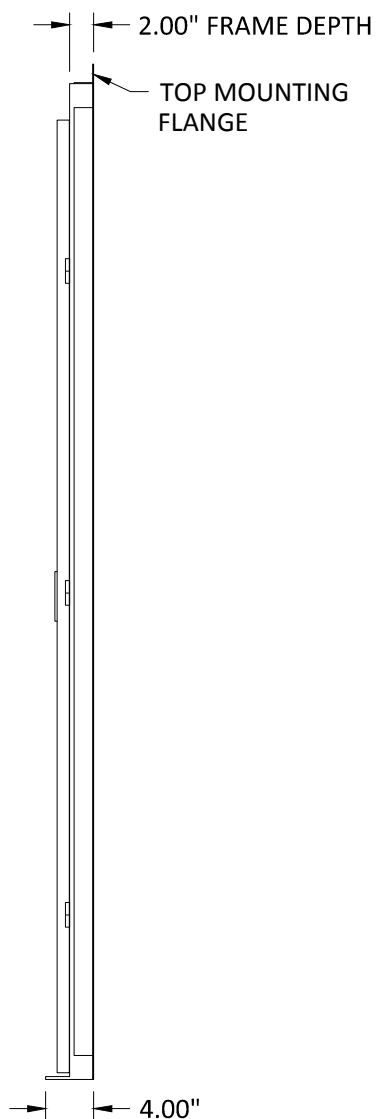
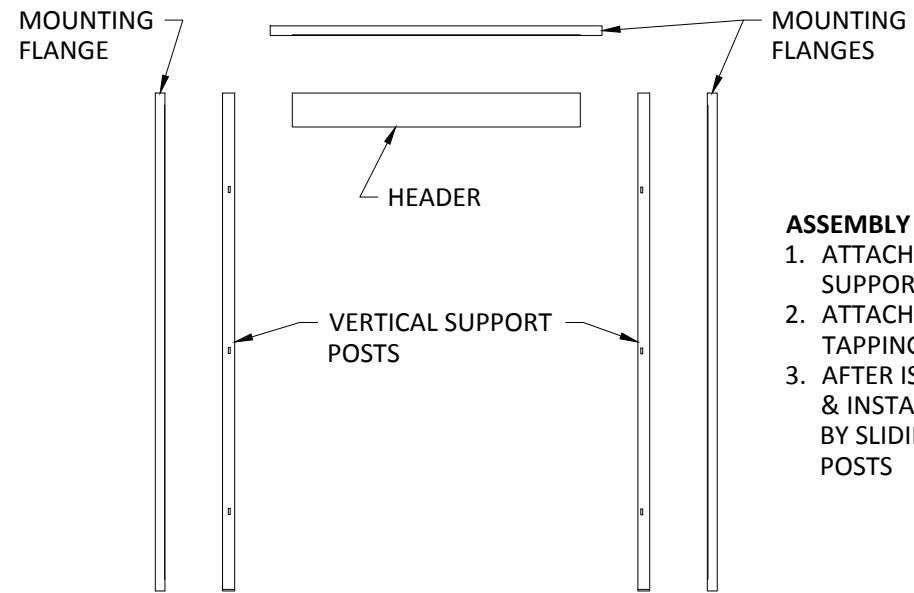


FRONT VIEW
SCALE: 1" = 16"

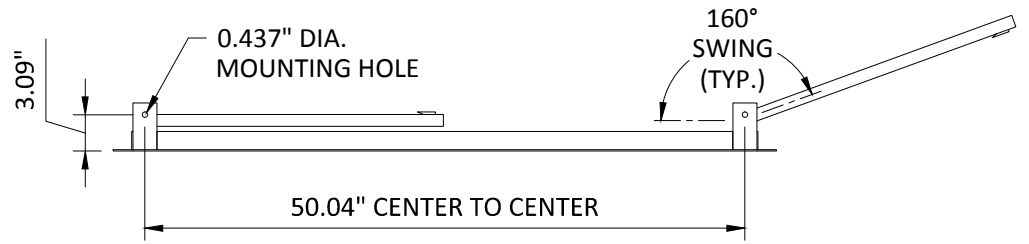


SIDE VIEW
SCALE: 1" = 16"

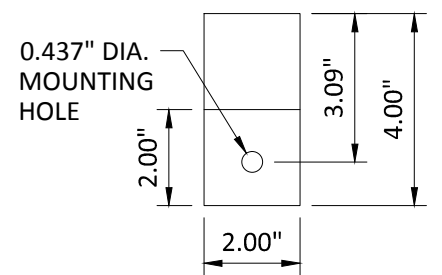


**EXPLODED VIEW
(FRAME & MOUNTING FLANGES)**
SCALE: 1" = 32"

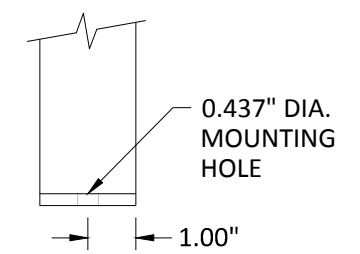
- ASSEMBLY NOTES**
1. ATTACH HEADER TO VERTICAL SUPPORT POSTS WITH SCREWS
 2. ATTACH FLANGES WITH SELF TAPPING SCREWS
 3. AFTER IS FRAME IS ASSEMBLED & INSTALLED, ATTACH DOORS BY SLIDING THEM ONTO HINGE POSTS



BOTTOM VIEW
SCALE: 1" = 16"



FOOT PAD DETAIL - PLAN VIEW
SCALE: 1" = 4"



FOOT PAD DETAIL - FRONT ELEV.
SCALE: 1" = 4"

GENERAL INFORMATION

DIMENSIONS

DOOR FRAME EXTERIOR DIMENSIONS: 55.29" WIDE, 83.00" HEIGHT
DOOR(S) WIDTH: 24.00"

MATERIALS

DOOR & FRAME: SHEET STEEL W/ BLACK POWDER COAT
DOOR INSERT: SEE BELOW

INSERTS

- 8mm TWINWALL POLYCARBONATE PLASTIC (CLEAR)
- 0.125" SOLID POLYCARBONATE PLASTIC (CLEAR)
- 0.125" CPVC (TINTED)
- CUSTOM (CONTACT US FOR CUSTOM OPTIONS)

MISCELLANEOUS

WEIGHT: 104 lbs
DOOR(S) SWING: 160°

PROVIDED BY:	ITS	REVISION #:	1.01
ALT. UNITS:	-	DATE:	4/15/14
SCALE:	VARIES	SHEET:	1 OF 1

**POLARGY - POLARPLEX
P2 SWING DOOR**

REVISION	DATE
-	-
-	-
-	-
-	-



THIS DRAWING AND SPECIFICATIONS HEREIN ARE THE PROPERTY OF POLARGY, INC. AND SHALL NOT BE COPIED, REPRODUCED OR USED IN WHOLE OR IN PART, AS THE BASIS FOR THE MANUFACTURE OR SALE OF ITEMS WITHOUT WRITTEN PERMISSION FROM POLARGY, INC. THIS DRAWING IS BASED UPON LATEST AVAILABLE INFORMATION AND IS SUBJECT TO CHANGE WITHOUT NOTICE.