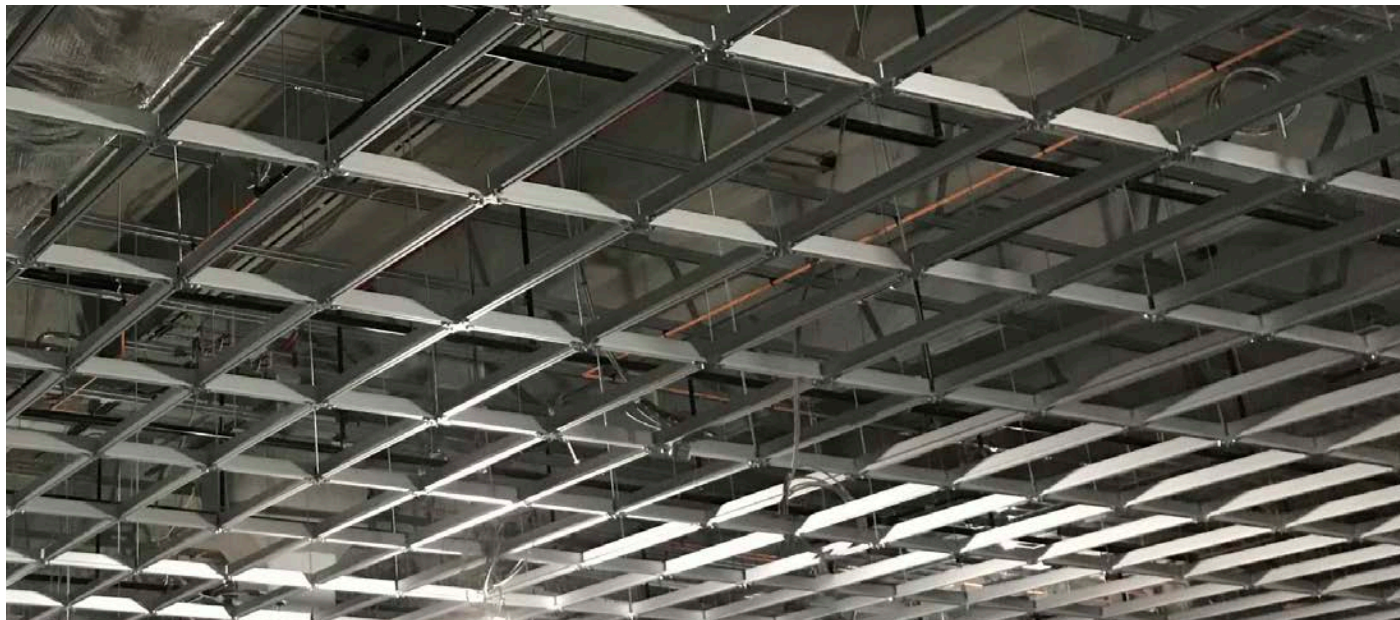


PICS

Polargy Integrated Ceiling System

WE KEEP
THE CLOUD
COOL™

Aluminum Structural Grid System for Data Centers



Polargy Integrated Ceiling System

The PICS™ structural ceiling is an ideal solution for integrating the structural support for the data center's cabling, power, containment, lighting and ceiling tiles. The System has the load carrying capacity and adaptability for making connections at any location in the ceiling. With a continuous support channel along the bottom of the grid, a PICS™ structural ceiling provides ease and flexibility in the white space layout. And, it's simple design makes it economical and easy to install.

Benefits and Details

- 4' x 6' support rod spacing requires 1/3 less ladder time which improves safety and reduces field labor.
- Bottom plate connectors are inherently stronger and require 50% fewer bolts for assembly.
- System is supported from the building structure/roof with rods spaced at 4' x 6' reducing the number of threaded rods by 33%.
- Option to deploy at a 4' x 4' spacing for high capacity requirements.
- All extrusions have a continuous 3/8-16 thread channel for connecting and suspending at any location along the extrusion.
- Aluminum with clear anodized finish.



1148 SONORA COURT
SUNNYVALE, CA 94086
888.816.8338

PICS

Polargy Integrated Ceiling System

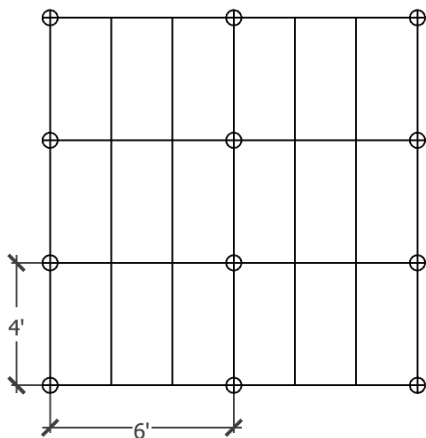
WE KEEP
THE CLOUD
COOL™

Key Advantages that Save Time and Money

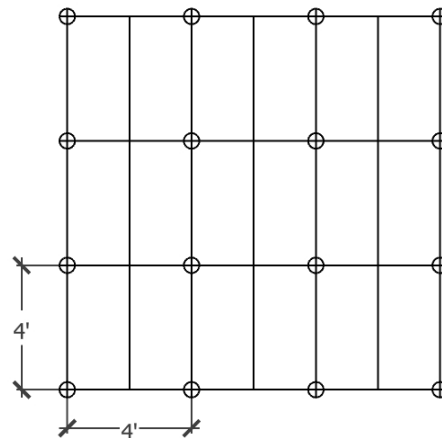
The PICS™ Structural Ceiling System requires one-third fewer roof supports and half the number of connecting bolts compared to other systems. PICS™ is supported from the building structure with hangers spaced at 4'x6' while other systems require 4'x4' hanger spacing. The 4-Way Connectors require only 4 bolts while other systems require 8 bolts. These differences mean that installers save substantial time and money with a PICS™ Structural Ceiling System.

33% Fewer Threaded Rod Roof Support Hangers

Hanger Rods at 4'x6' Spacing

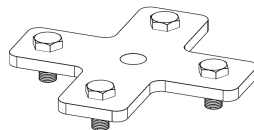


Hanger Rods at 4'x4' Spacing

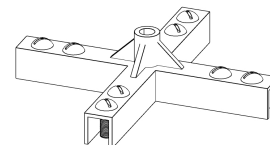


50% Fewer Connecting Bolts

PICS™ 4-Way



Other 4-Way



30,000 Square Foot Ceiling		
	PICS at 4'x6'	Other at 4'x4'
Threaded Rods to Roof	1250	1875
Connector Bolts	15,000	30,000