



# **PolarPlex™ P2 Sliding Door Installation Guide**

Revision 7

**Polargy, Inc.**  
256 Gibraltar Drive, Suite 106  
Sunnyvale, CA 94089  
888.816.8338  
[www.polargy.com](http://www.polargy.com)

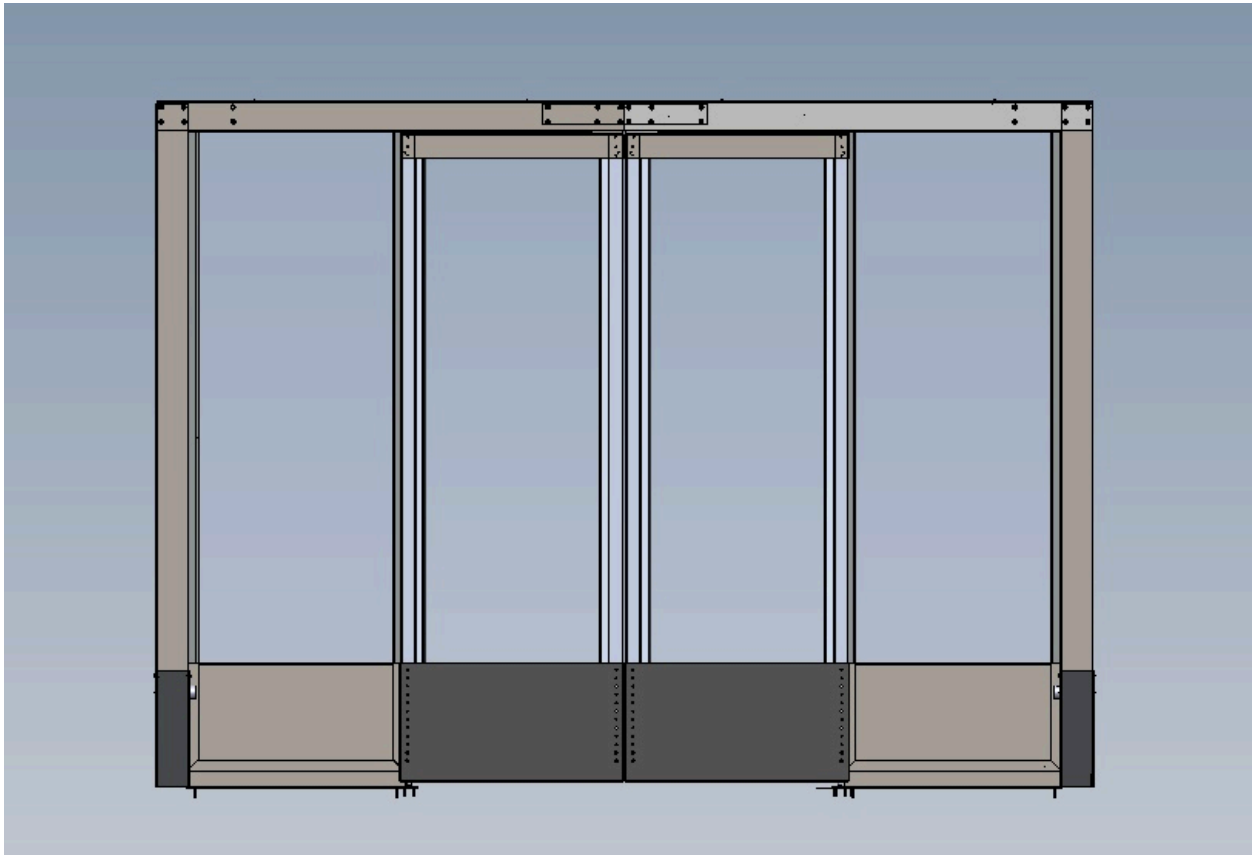


# PolarPlex™ P2 Sliding Door Installation Guide

## P2 Sliding Door Overview

The PolarPlex™ P2 Sliding Door is an adjustable height aisle end containment door. The door has an automatic close feature and is adjustable in heights from 79" to 89". Height adjustments are made by extending the vertical support legs and by adjusting the bottom section of the door itself.

Adjustable height side Extender Panels are available for aisles greater than 54" in width. These side extenders increase the aisle width coverage up to 103".



**P2 Sliding Door with Extender Panels**

## Tools Required

- 5/32" hex wrench for flange button heads screws and flat head screws
- 1/8" hex wrench for set screws
- Small philips head screwdriver for adjustable door and extender panel screws
- Drill and other tools for making floor and rack attachments

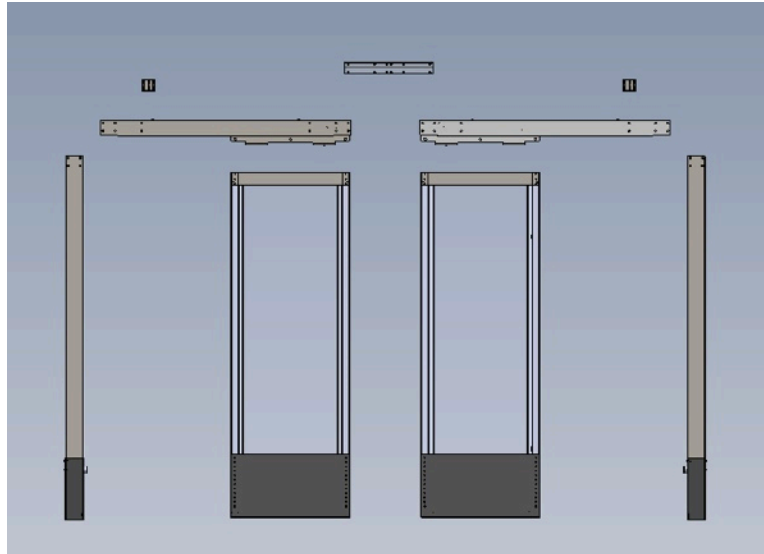


# PolarPlex™ P2 Sliding Door Installation Guide

## Component Overview

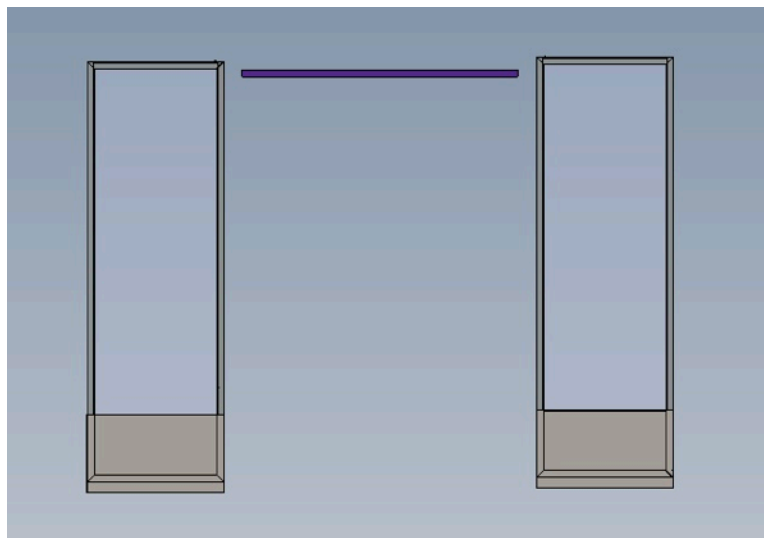
The sliding door assembly comes boxed and is comprised the following basic components:

1. Horizontal Header Track Assembly (2 pieces)
2. Vertical Support Posts (2 posts)
3. Coupler
4. Sliding Door Assemblies (2 doors)
5. Hardware Kit (Roller guides, gaskets, brush grommet, brackets, screws)



The Extender Panels are comprised the following basic components:

1. Adjustable Height Panels (2 pieces)
2. Gap Filler Gasket
3. Hardware Kit (screws, brackets)

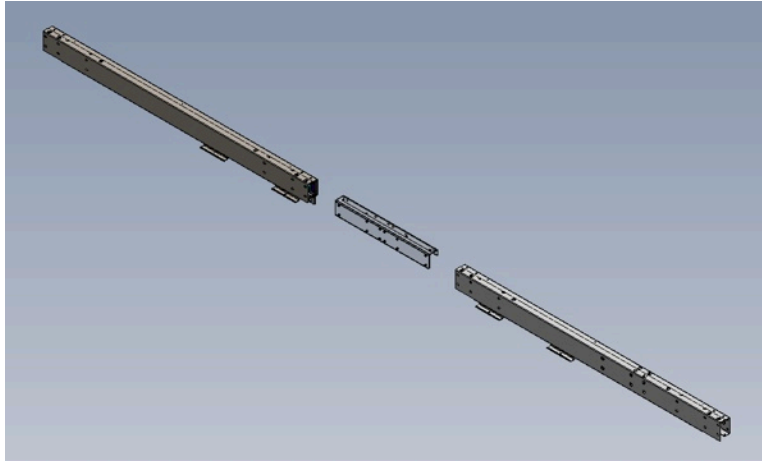




# PolarPlex™ P2 Sliding Door Installation Guide

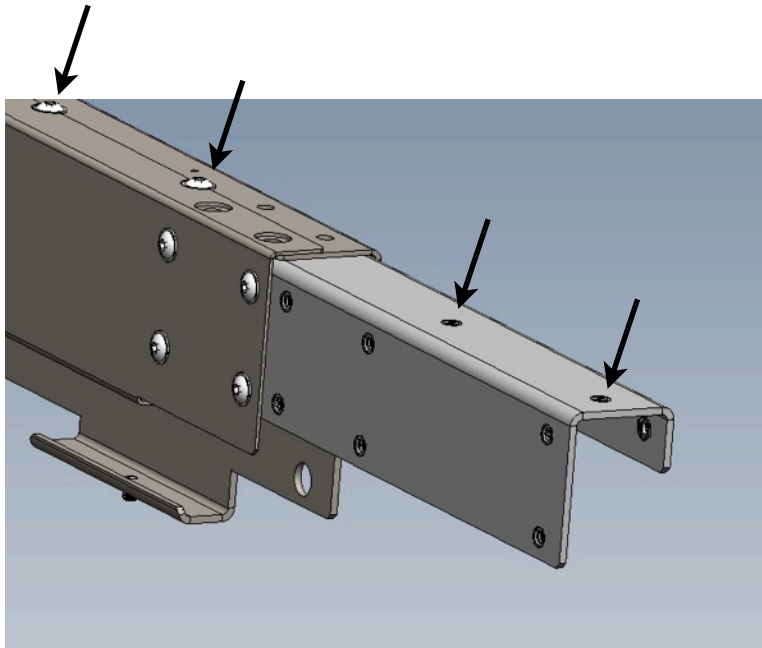
## Installation Steps

- 1) Connect the two Header Track Assemblies with the Coupler using flange button head screws and washers.



Exploded Header Tracks and Coupler

Important: Install the top four screws first.

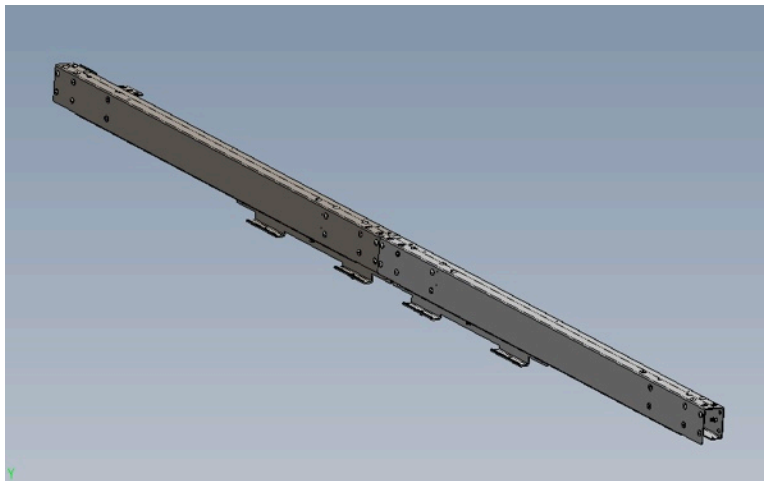
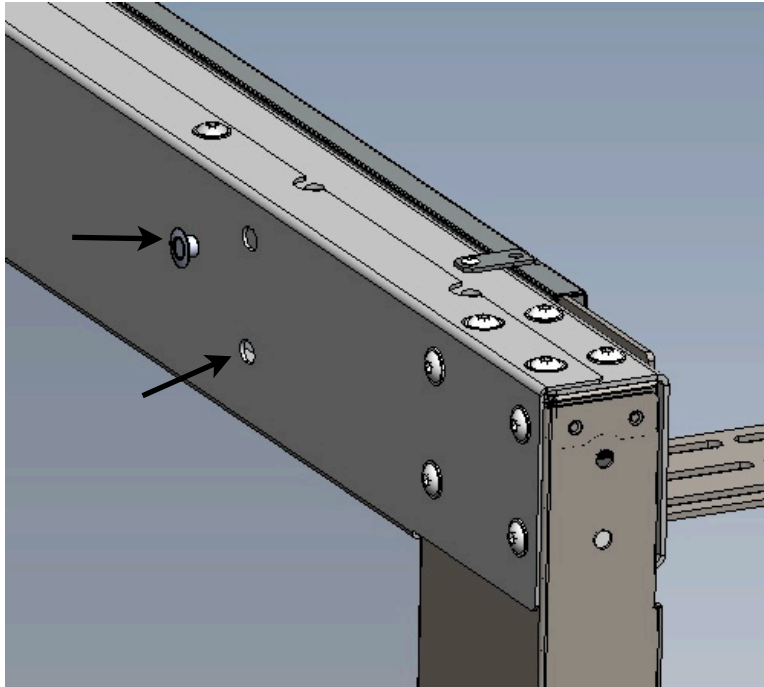


One Header Track with Coupler



## PolarPlex™ P2 Sliding Door Installation Guide

2) Install Cap Plugs into unused header holes.



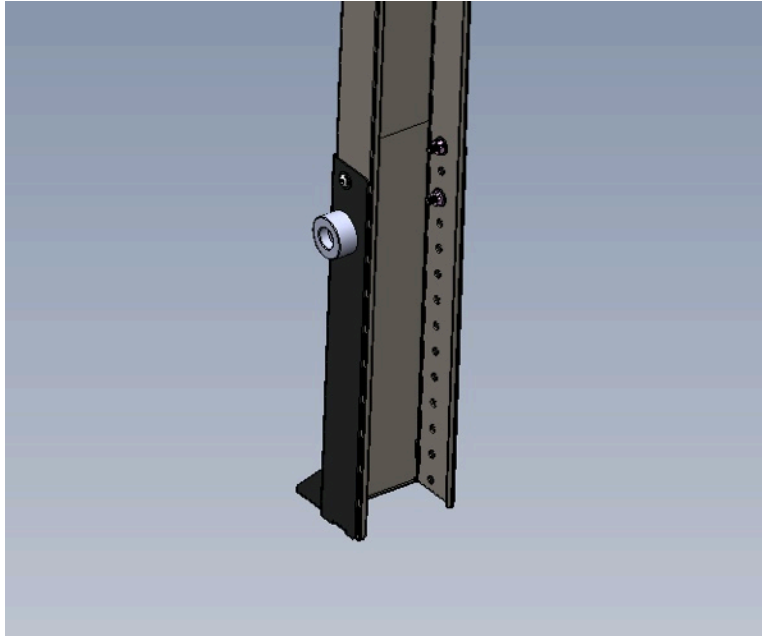
**Completed Header Track Assembly**



## PolarPlex™ P2 Sliding Door Installation Guide

### 3) Set The Height of the Vertical Support Posts

The vertical support posts are shipped in the lowest position which gives an inside frame opening height of 78.9" and an external frame height of 82.5". Adjust the vertical support footer to create the desired height. Make sure the rubber stops on the Vertical Support Posts are facing inward when they are attached to the Header Track.

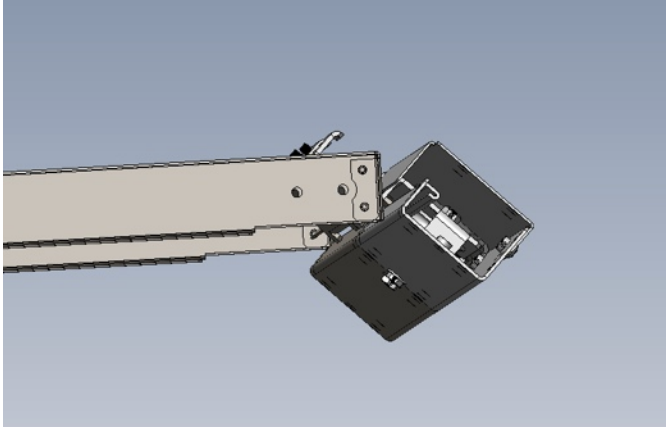




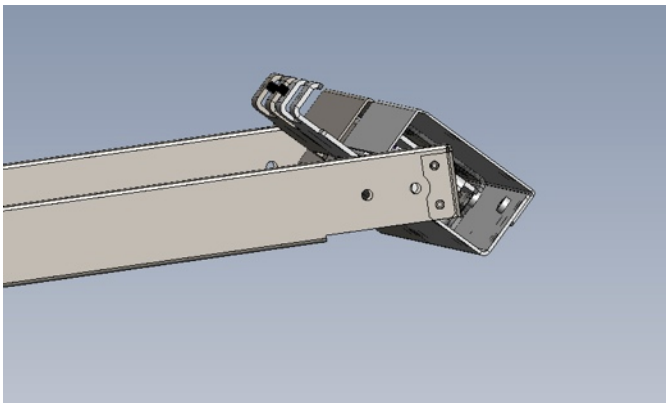
## PolarPlex™ P2 Sliding Door Installation Guide

4) Attach the Vertical Support Posts to the Header Track. (This is a two man job)

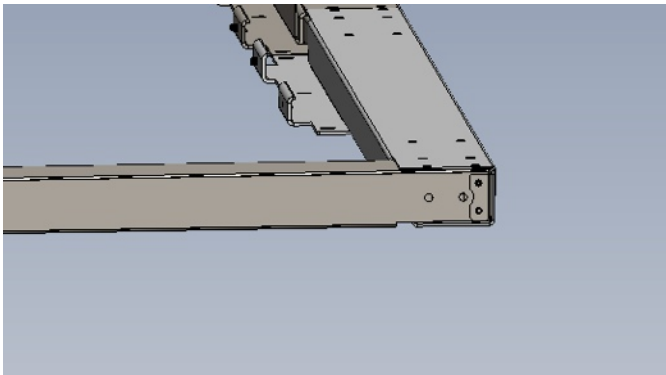
The header needs to be tilted about 45 degrees, then slide the vertical posts partially into the header sides, then tilt the header back flat and push the posts in the remaining inch or so. Then secure with flange button head screws. (Another alternative is to remove the Header Track face plate, install the Vertical Posts, then re-attached the face plate.)



#1 Tilt Header



#2 Slide Posts Partially On

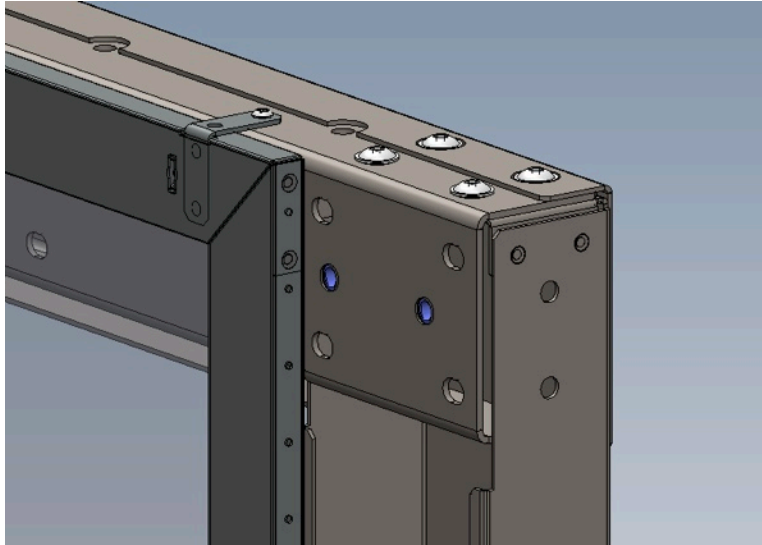


#3 Tilt Header Back Flat, Push Posts In



## PolarPlex™ P2 Sliding Door Installation Guide

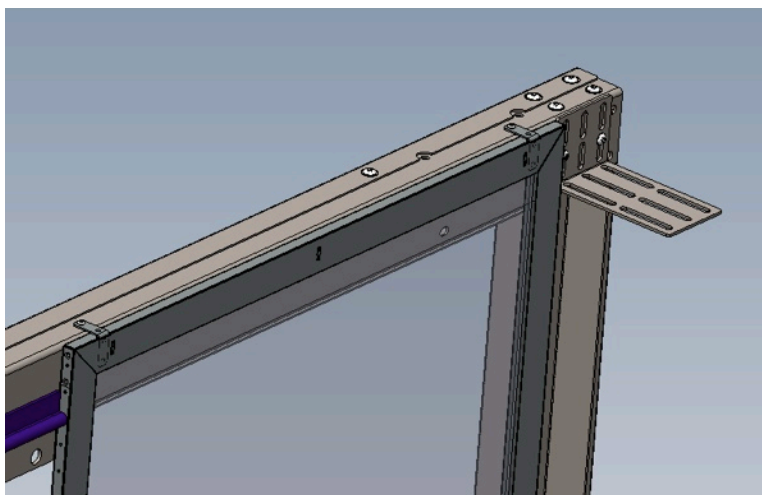
5) If Extender Panels are being used, adjust the height of the panels to match the height of the top of the Header Track.



Extender Panel Behind Header Track

6) Attach the Header Track Assembly/Vertical Support Posts to the Racks with the brackets.

NOTE: If Extender Panels are being installed, place the Header Track/Vertical Posts temporarily offset from the racks by about 2". Next, slide the Extender Panels into place, then push the entire assembly flush against the racks. Last, secure the Extender Panels to the Header, then the Header to the racks.



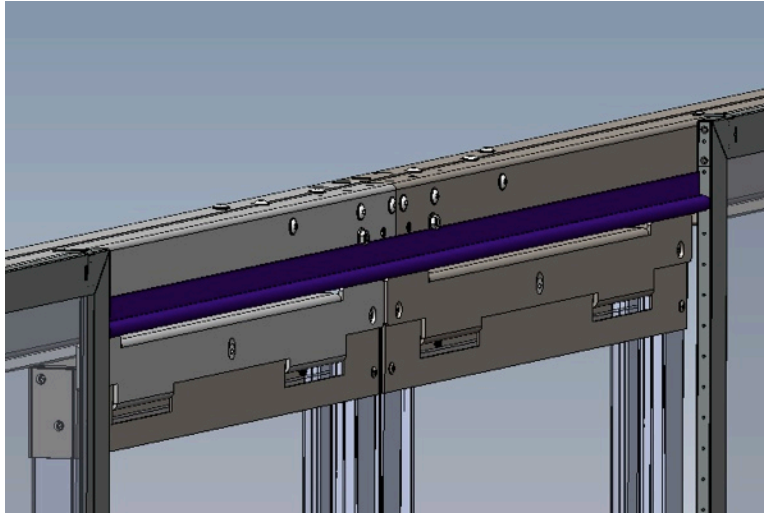
Extender Panels Attach at Top with Two Brackets





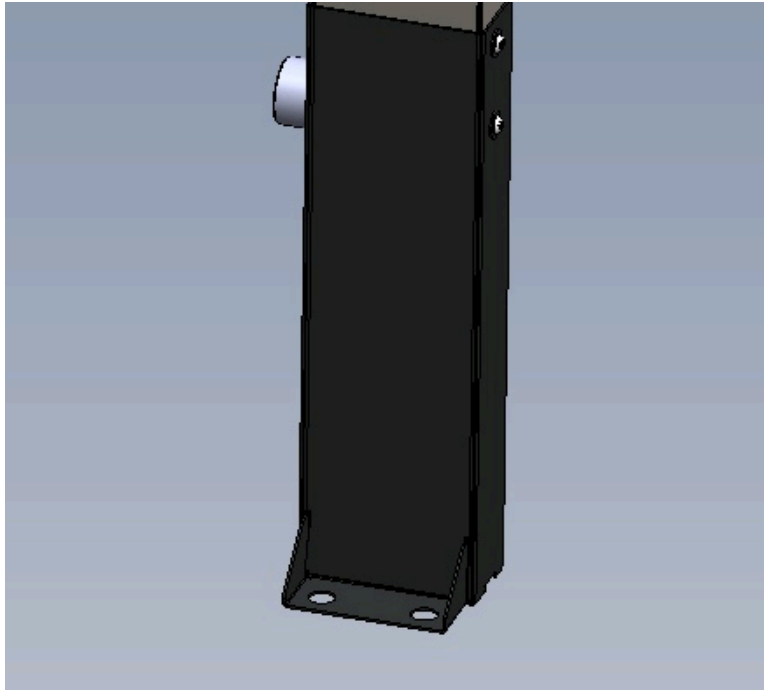
## PolarPlex™ P2 Sliding Door Installation Guide

NOTE: Attach Gap Filler Gasket between the Extender Panels. Gasket attaches to back of Header Track.



Gasket Shown in Purple but is Black

- 7) Secure the Vertical Support Post feet to the floor with hardware (not provided) as needed for the floor type and conditions. Hole diameter is 9/16".

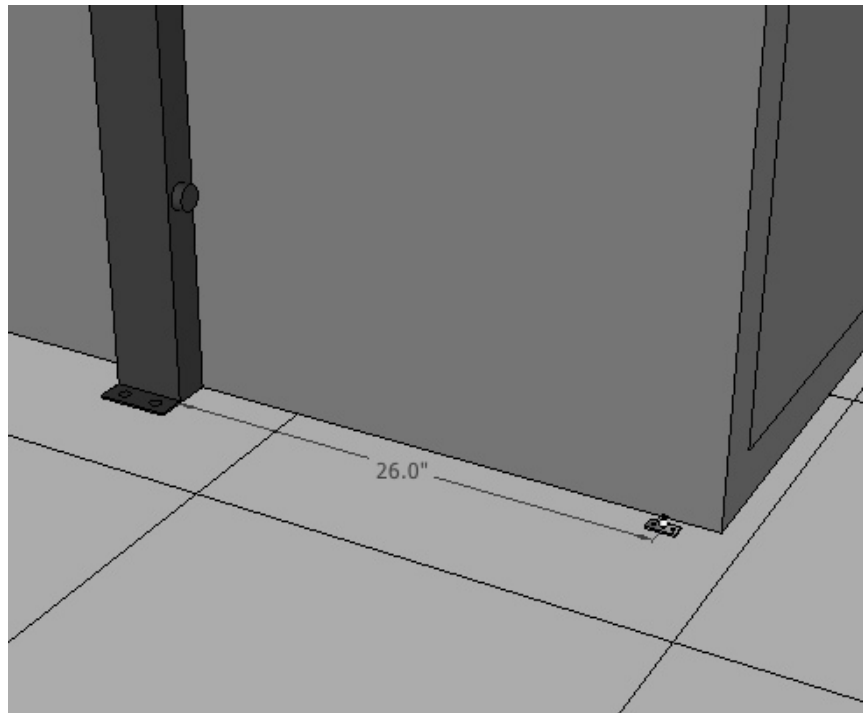
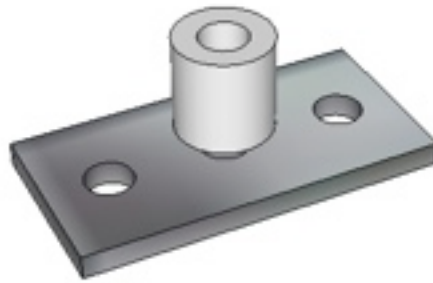




## PolarPlex™ P2 Sliding Door Installation Guide

8) Secure the Roller Guide to the floor.

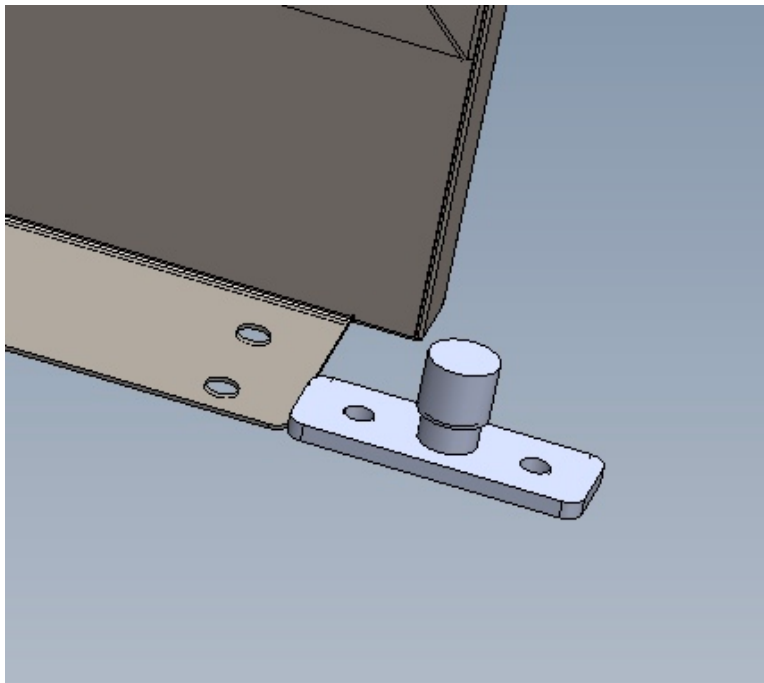
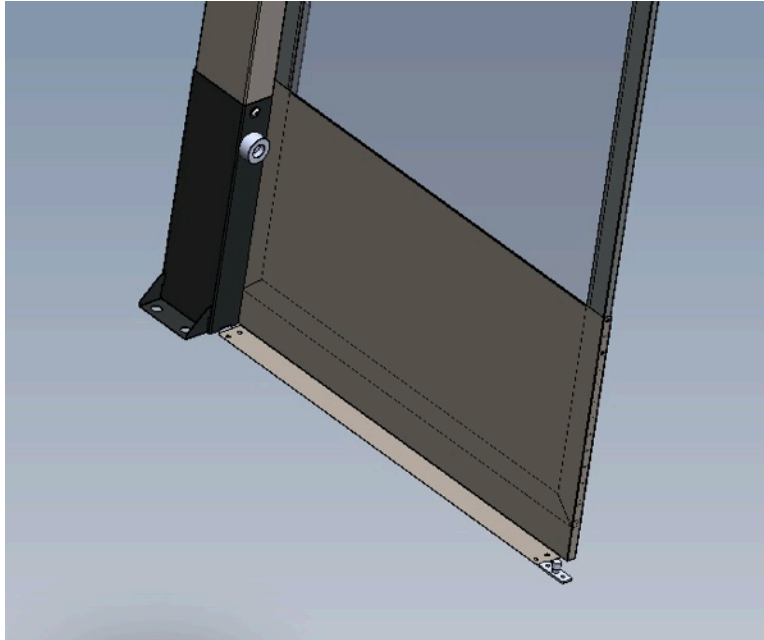
Place the roller guide inline with the door center-line and at 26" from the inside vertical post to the center to the roller. If floor is not level, guide may require shimming to insure roller engages bottom of door track.





## PolarPlex™ P2 Sliding Door Installation Guide

NOTE: If the Extender Panels are being installed, then place the Roller Guide at the inside edge of the flange on the bottom of the Extender Panel.

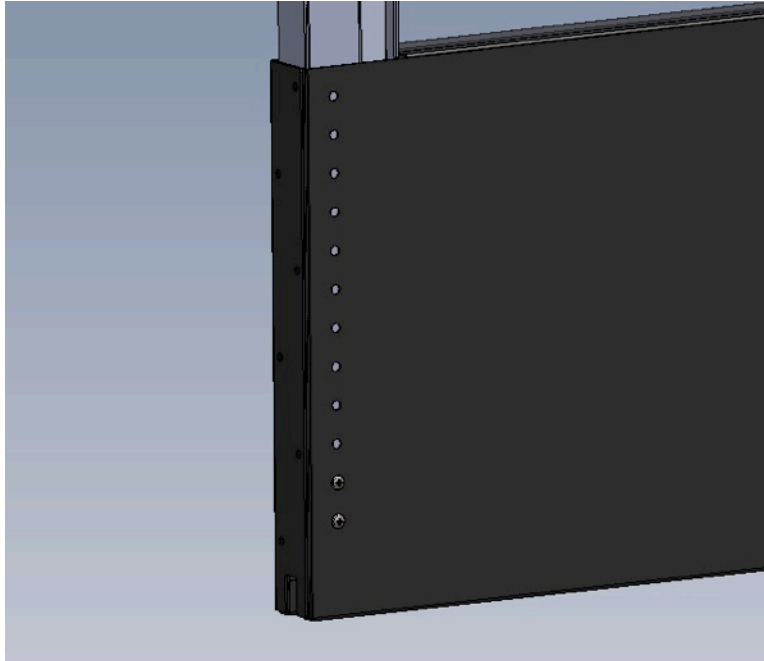




## PolarPlex™ P2 Sliding Door Installation Guide

9) Adjust the height of the doors.

The door is delivered is the shortest setting. To extend the door, simply remove the screws, slide the bottom piece to the desired location and re-attach the screws.

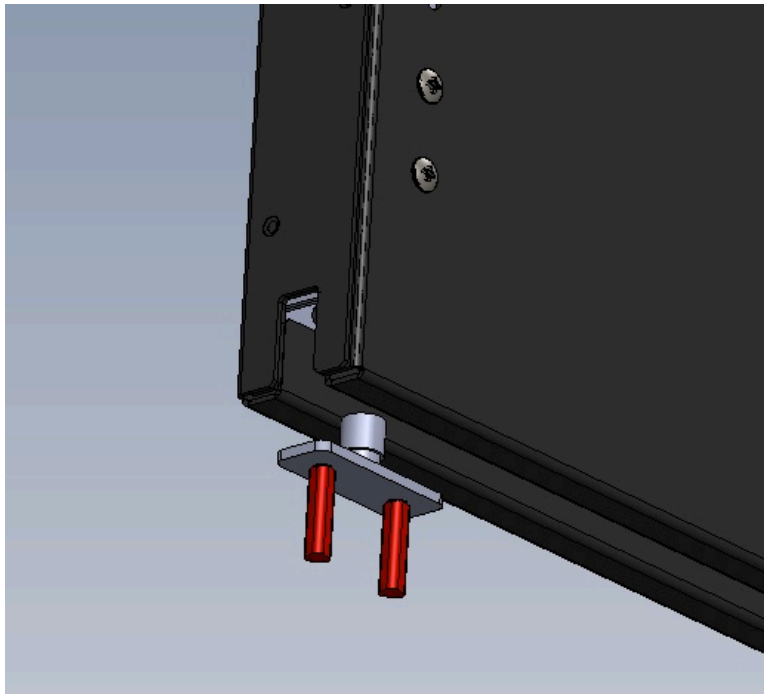
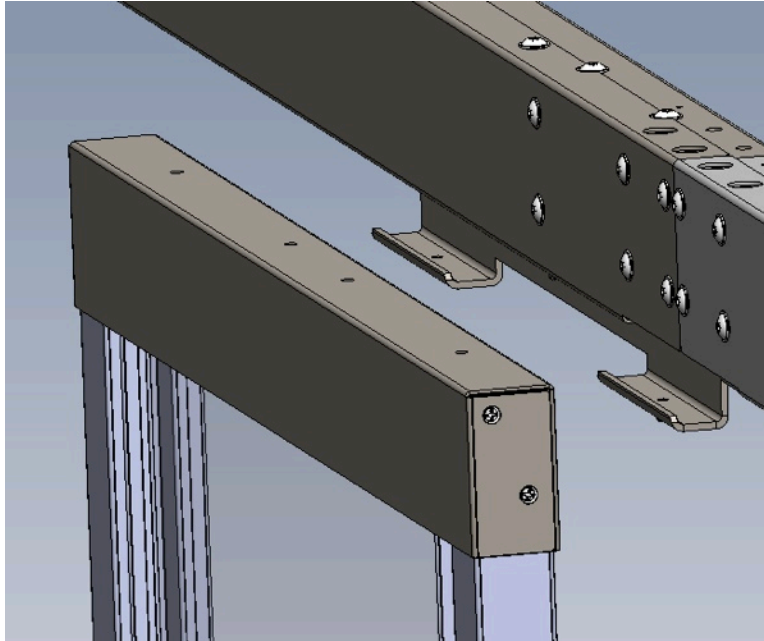




## PolarPlex™ P2 Sliding Door Installation Guide

10) Attach the Doors to the Header.

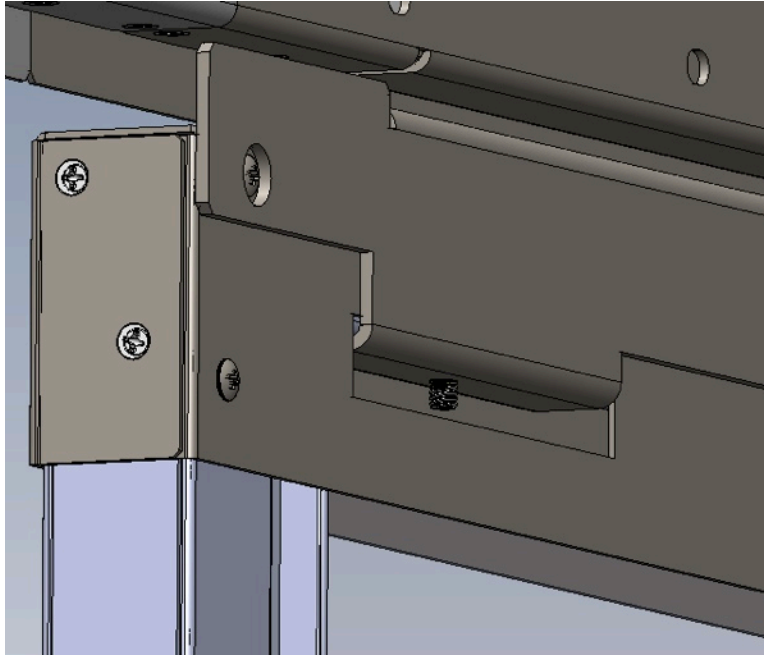
Match the door slots to the carriage hooks; place the door onto the hooks while simultaneously positioning bottom door gap over roller. Confirm the door slides back and forth smoothly.



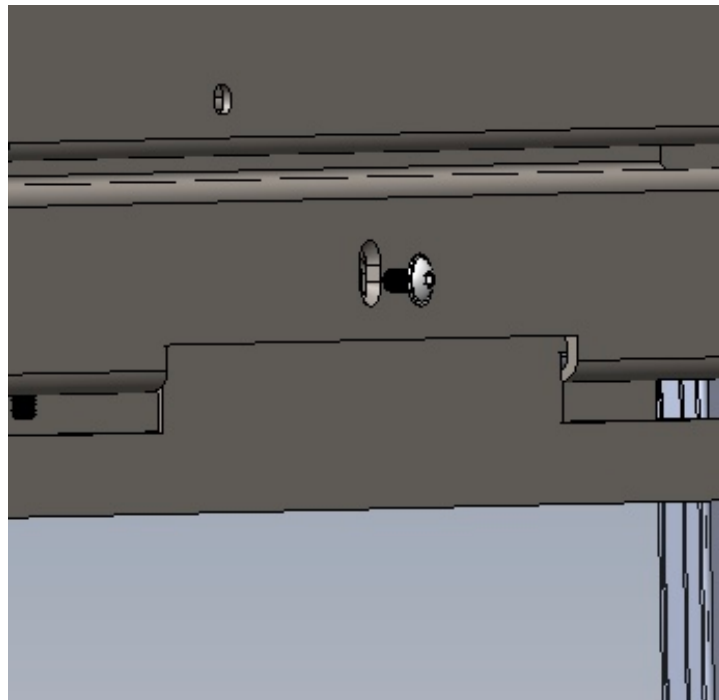


## PolarPlex™ P2 Sliding Door Installation Guide

11) Level, if necessary, with set screw using 1/8" hex wrench.



12) Secure with button head screw using 5/32" hex wrench.

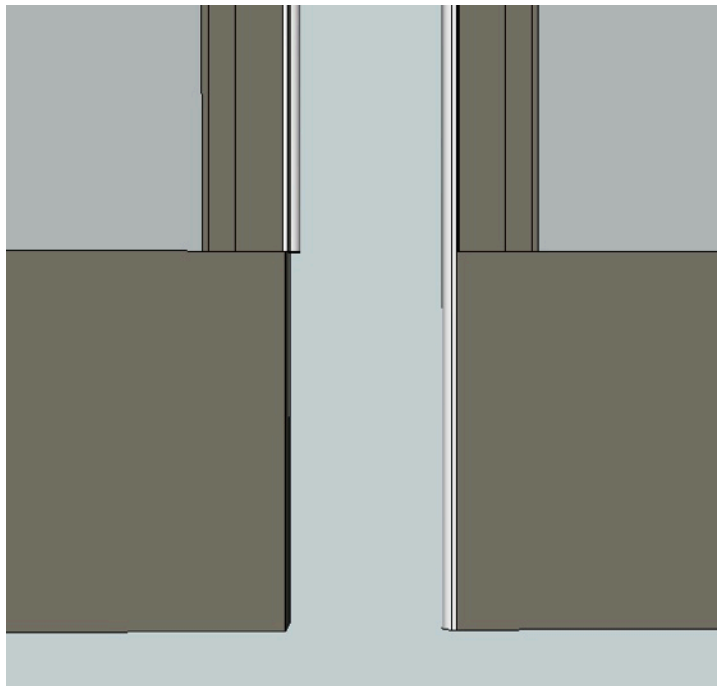
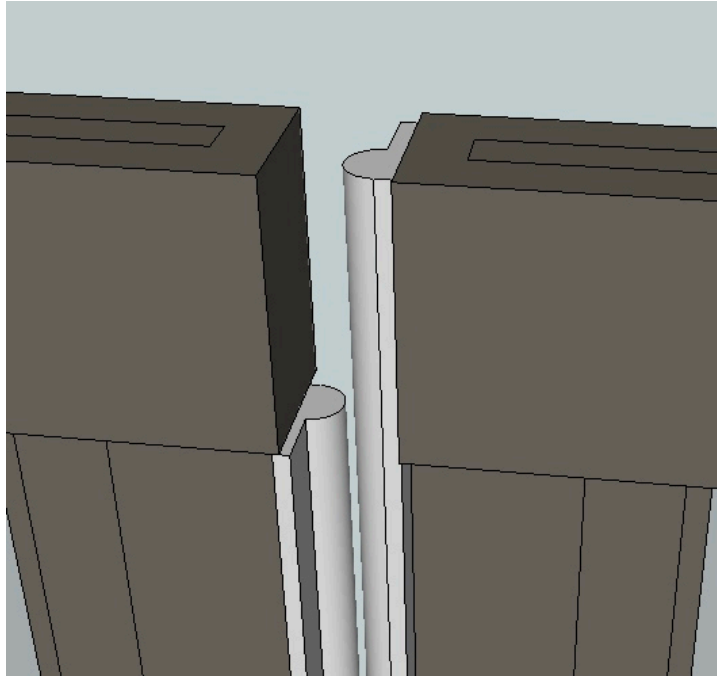




## PolarPlex™ P2 Sliding Door Installation Guide

### 13) Attach Seal Gaskets

Attach the gaskets to the inside edge of the doors. Select one door and run gasket runs the entire length of door. On the opposite door, run the gasket only between the upper and lower sections as shown below. Cut to size with scissors.





## PolarPlex™ P2 Sliding Door Installation Guide

### 14) Attach Brush Grommets

The strip brush grommet runs 5' and is attached to door starting just below the top head piece of the door. The brush grommet is attached with self tapping screws in the position as shown below.

