



POLARGY

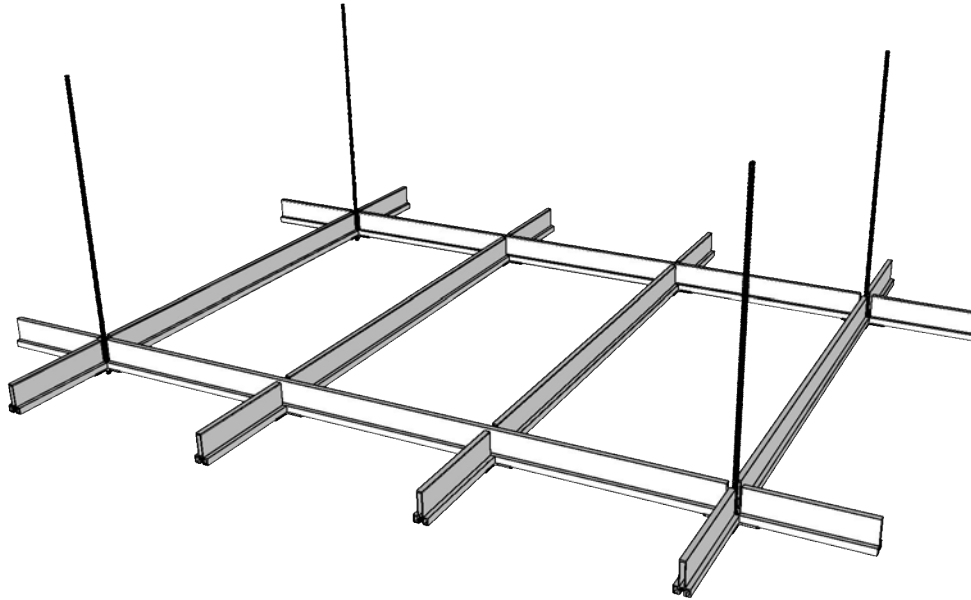
LAST MODIFIED
September 8, 2019

COMPANY
POLARGY, INC.
1148 Sonora Court
Sunnyvale, CA 94086

TITLE
**PICS
STRUCTURAL CEILING
INSTALLATION GUIDE**

01

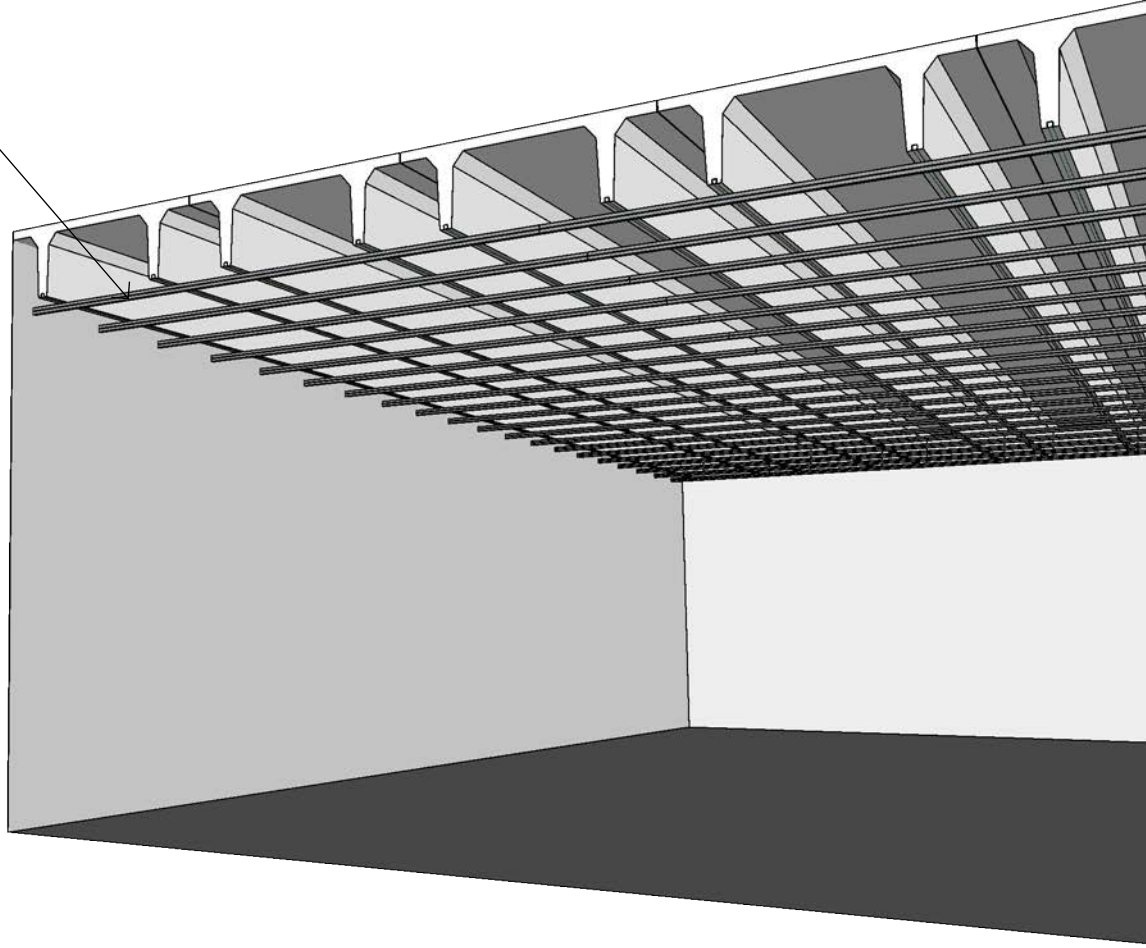
PICS: POLARGY INTEGRATED CEILING SYSTEM INSTALLATION GUIDE



SEQUENCE OF INSTALLATION

- 1) PREPARE THE ROOF WITH SUPPORT POINTS - TYPICALLY ROWS OF STRUT TO PRECAST TEES OR TO TRUSS/BEAMS.
- 2) ADD THE PERIMETER WALL ANGLE USING LASER FOR SETTING ELEVATION.
- 3) HANG THE RODS, CUT TO 1" BELOW CEILING ELEVATION USING LASER GUIDE. ADD UPPER NUT AT CEILING ELEVATION.
- 4) BUILD ASSEMBLY TABLE/JIG FOR MAKING 4'X12' GRID SECTIONS.
- 5) ASSEMBLE 4'X12' GRID SECTIONS.
- 6) INSTALL 4'X12' GRID SECTIONS SPACED EVERY OTHER 4', SECURE WITH WASHER AND NUT TO RODS.
- 7) INSTALL 4' CROSS TEES BETWEEN 4'X12' GRID SECTIONS.
- 8) ADD EDGE TRIM TO PERIMETER
- 9) ADD WALL ANGLE TRIM PIECES BETWEEN EDGE TEES.

- UNISTRUT SPACED AT 4' OR 6' DEPENDING ON TILE ORIENTATION AND DEPENDING ON STRUCTURAL REQUIREMENTS SET BY INSTALLER'S ENGINEER OR PROJECT'S ENGINEER

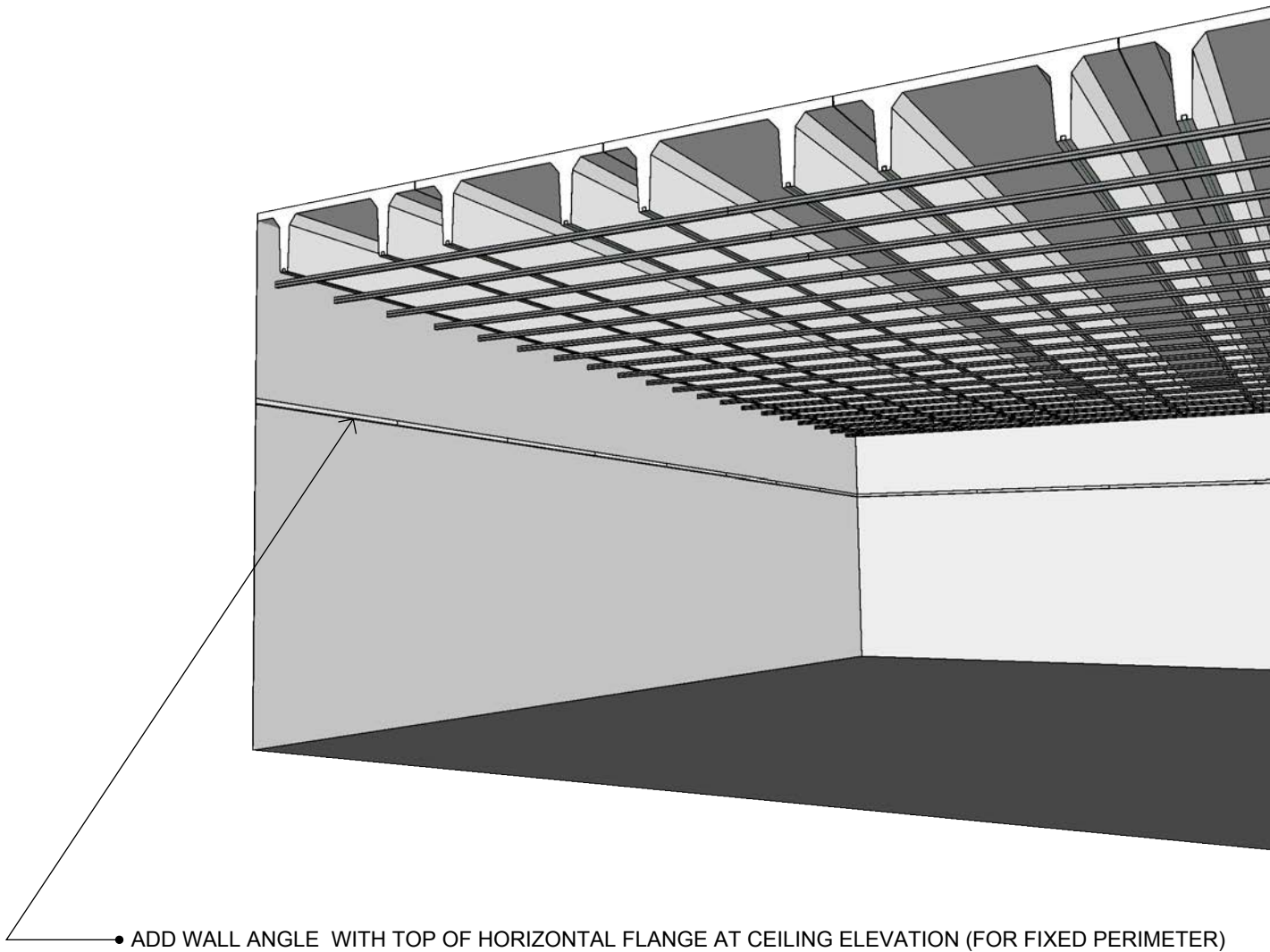


POLARGY

LAST MODIFIED
September 8, 2019

COMPANY
POLARGY, INC.
1148 Sonora Court
Sunnyvale, CA 94086

TITLE
**PICS
STRUCTURAL CEILING
INSTALLATION GUIDE**



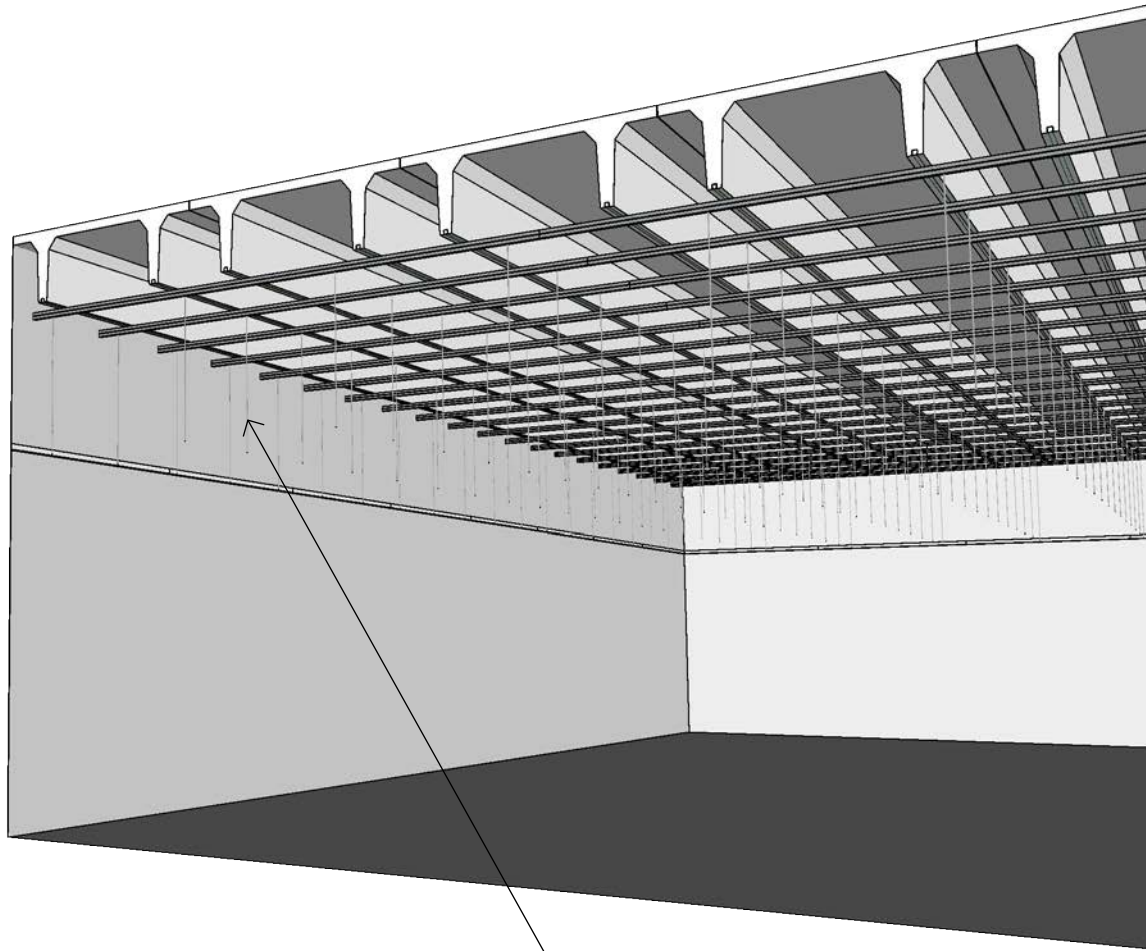
• ADD WALL ANGLE WITH TOP OF HORIZONTAL FLANGE AT CEILING ELEVATION (FOR FIXED PERIMETER)



LAST MODIFIED
September 8, 2019

COMPANY
POLARGY, INC.
1148 Sonora Court
Sunnyvale, CA 94086

TITLE
**PICS
STRUCTURAL CEILING
INSTALLATION GUIDE**



HANG THREADED ROD FROM UNISTRUT. SELECTION OF ROD SIZE BY INSTALLER'S ENGINEER OR PROJECT'S ENGINEER. CUT ROD TO APPROXIMATELY 1" BELOW CEILING ELEVATION. ●



POLARGY

LAST MODIFIED
September 8, 2019

COMPANY
POLARGY, INC.
1148 Sonora Court
Sunnyvale, CA 94086

TITLE
**PICS
STRUCTURAL CEILING
INSTALLATION GUIDE**

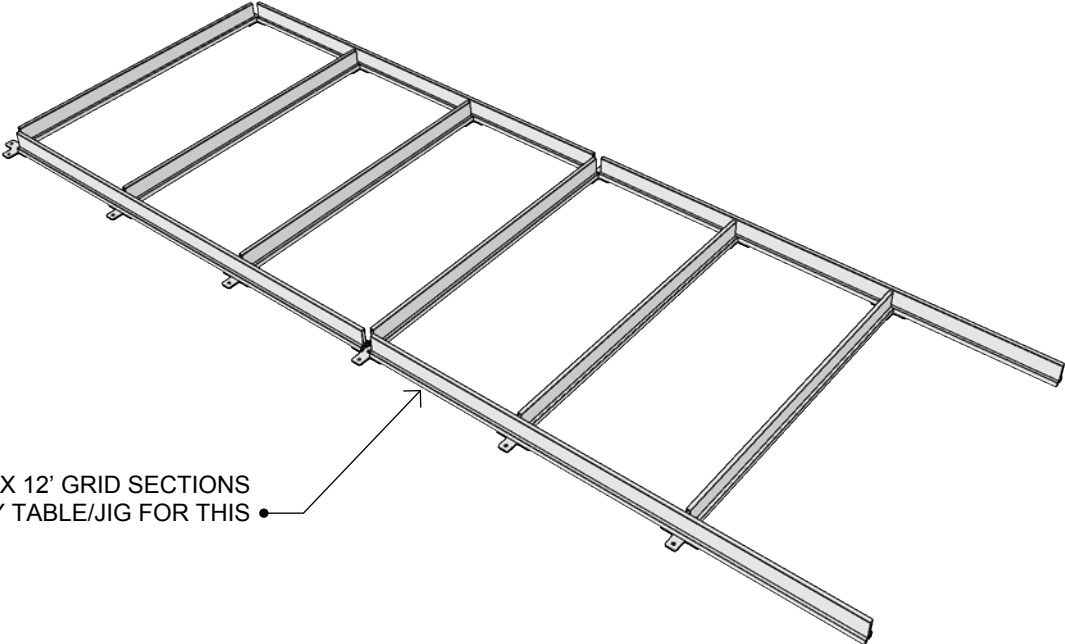


POLARGY

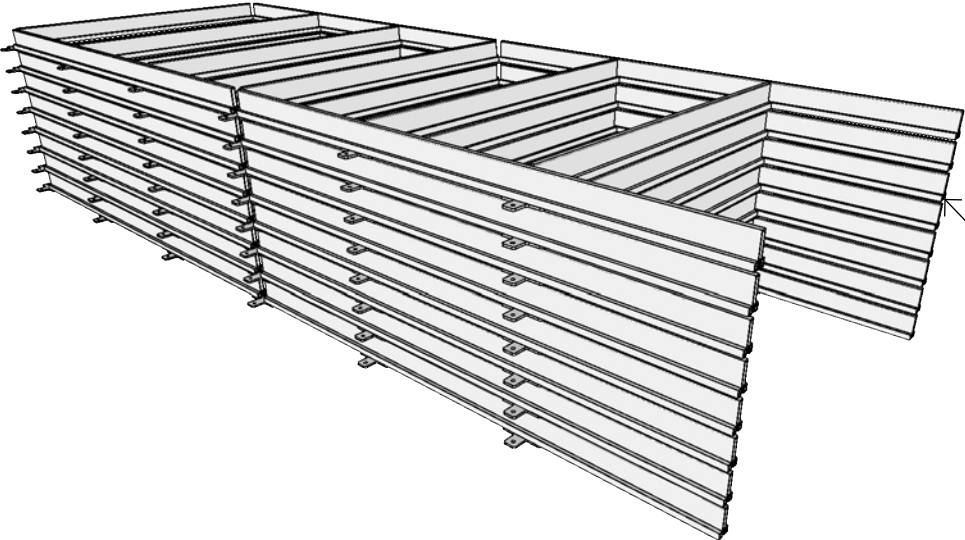
LAST MODIFIED
September 8, 2019

COMPANY
POLARGY, INC.
1148 Sonora Court
Sunnyvale, CA 94086

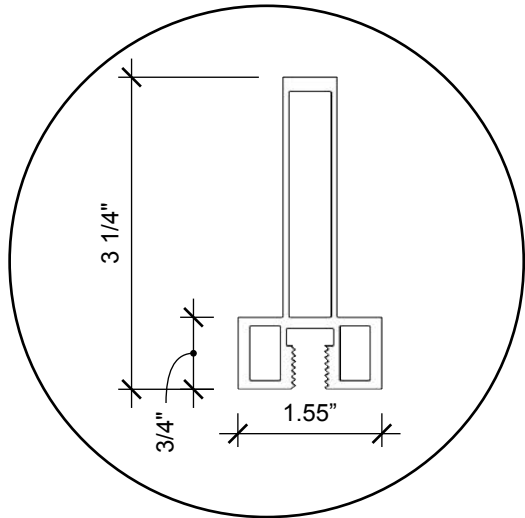
TITLE
**PICS
STRUCTURAL CEILING
INSTALLATION GUIDE**



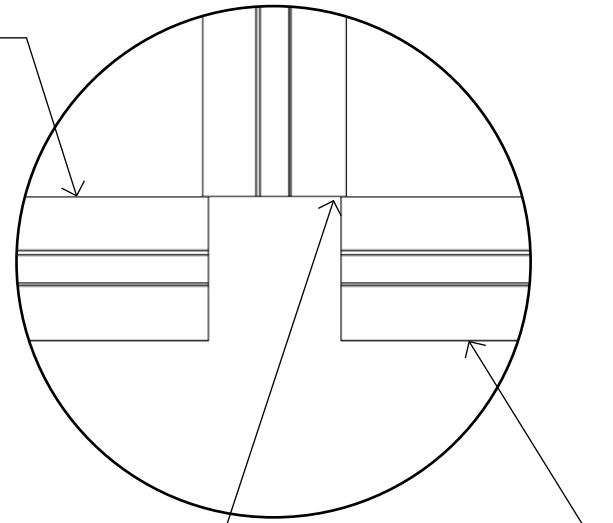
PRE-ASSEMBLE 4' X 12' GRID SECTIONS
BUILD ASSEMBLY TABLE/JIG FOR THIS



• STACK AND STAGE GRID SECTIONS AS NEEDED. BRACKETS PROTECT BOTTOM SURFACE FROM SCRATCHING WHILE STACKED

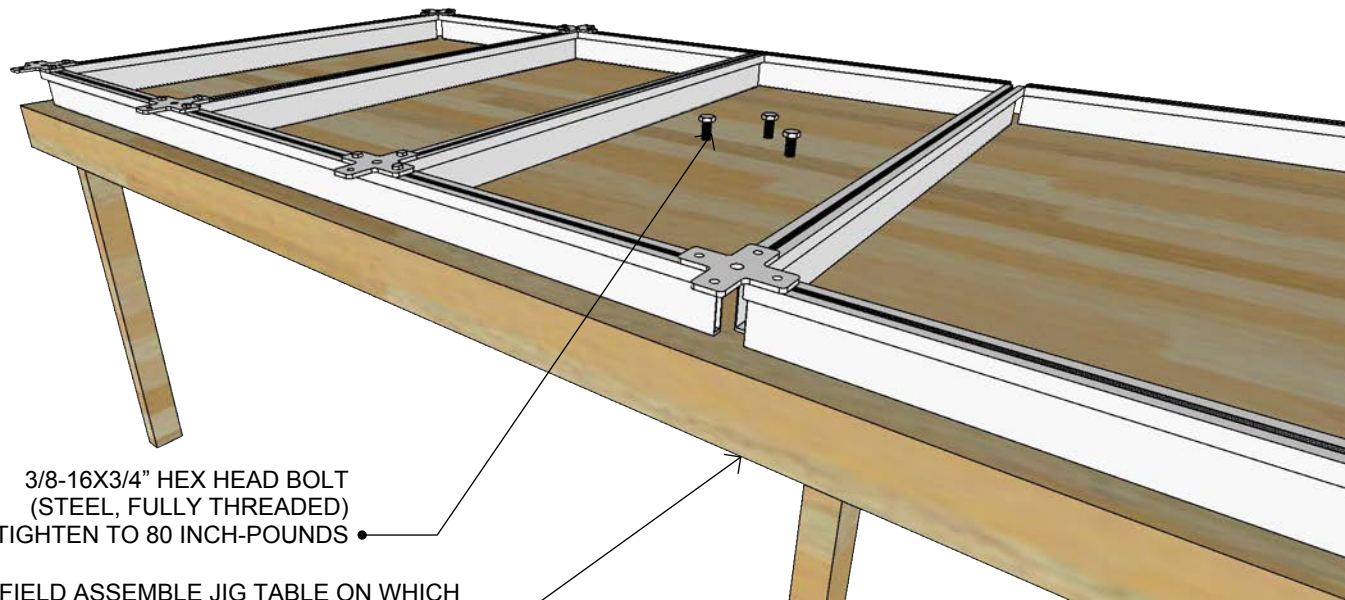


6' MAIN TEES (70.625")



4' CROSS TEES (46.44")

MAIN TEES POSITIONED ABOUT 1/16" (0.0625") INSIDE CROSS TEES,
 THE MAIN TEE POSITION CAN VARY A LITTLE,
 KEY DIMENSION ON JIG IS BETWEEN CROSS TEES AT 24" ON CENTER



3/8-16X3/4" HEX HEAD BOLT
 (STEEL, FULLY THREADED)
 TIGHTEN TO 80 INCH-POUNDS

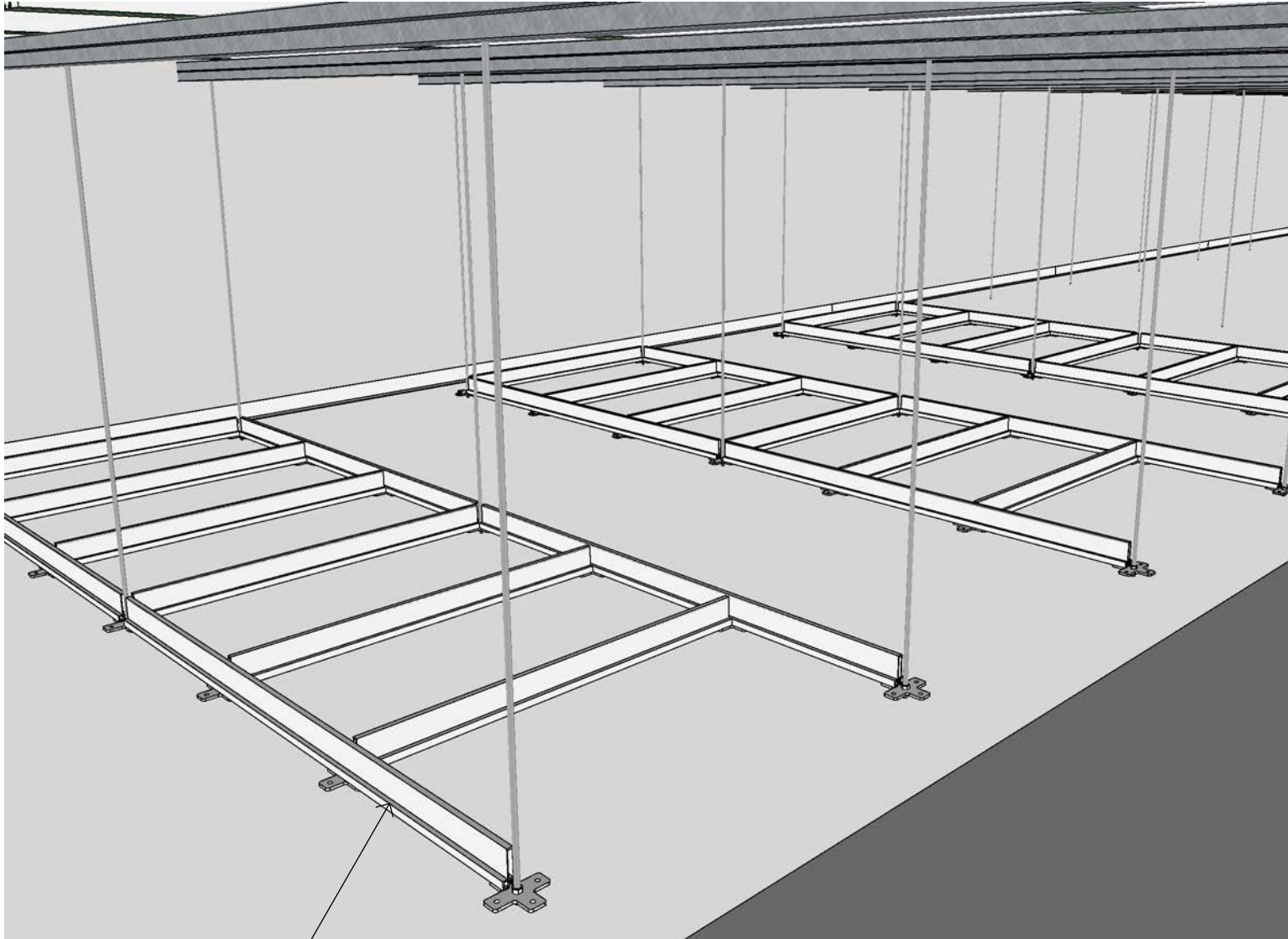
FIELD ASSEMBLE JIG TABLE ON WHICH
 4'X12' SECTIONS ARE BUILT



LAST MODIFIED
 September 8, 2019

COMPANY
 POLARGY, INC.
 1148 Sonora Court
 Sunnyvale, CA 94086

TITLE
**PICS
 STRUCTURAL CEILING
 INSTALLATION GUIDE**



● INSTALL 4'X12' GRID SECTIONS

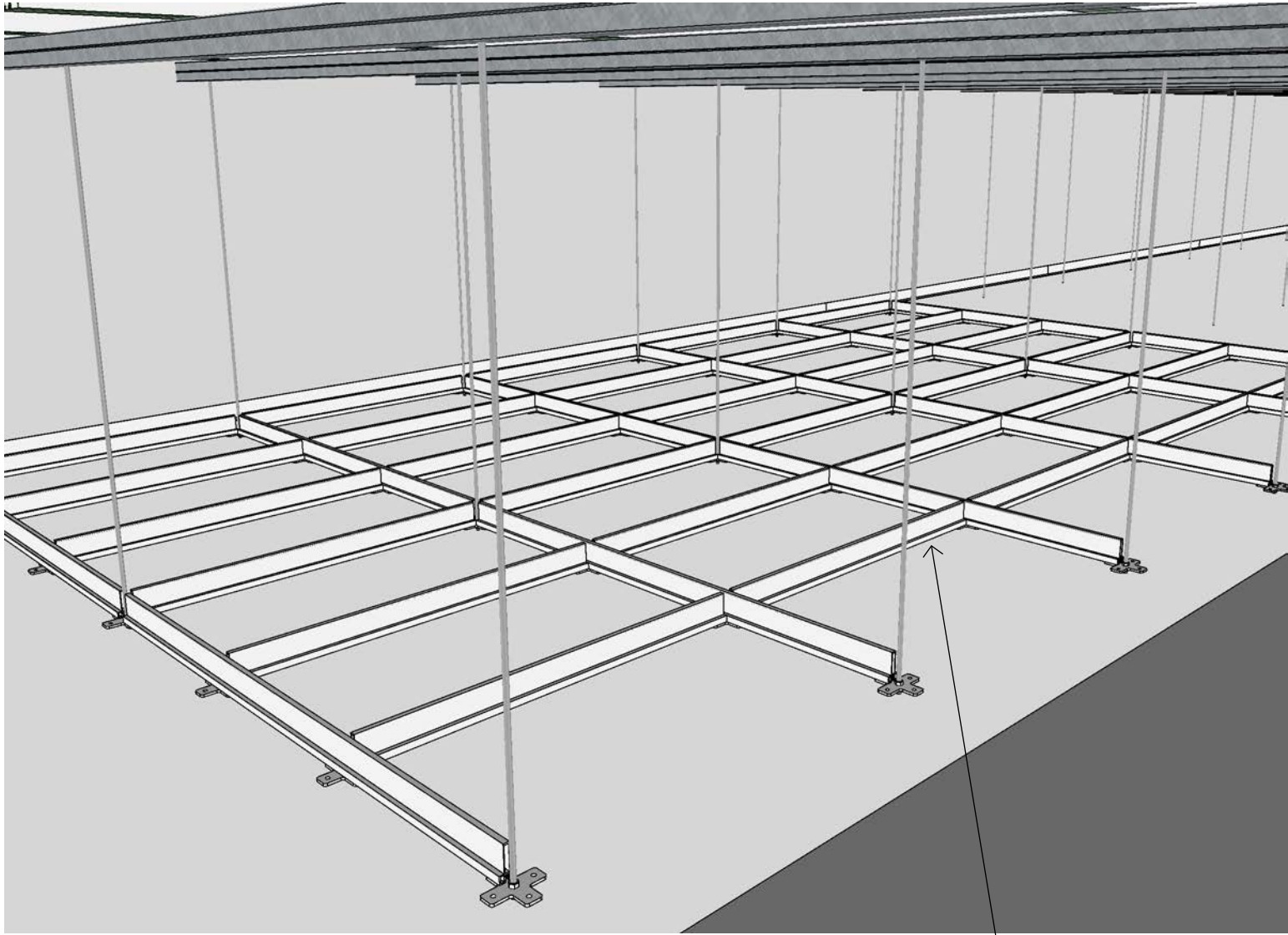


POLARGY

LAST MODIFIED
September 8, 2019

COMPANY
POLARGY, INC.
1148 Sonora Court
Sunnyvale, CA 94086

TITLE
**PICS
STRUCTURAL CEILING
INSTALLATION GUIDE**



ADD 4' CROSS TEES •



POLARGY

LAST MODIFIED
September 8, 2019

COMPANY
POLARGY, INC.
1148 Sonora Court
Sunnyvale, CA 94086

TITLE
**PICS
STRUCTURAL CEILING
INSTALLATION GUIDE**

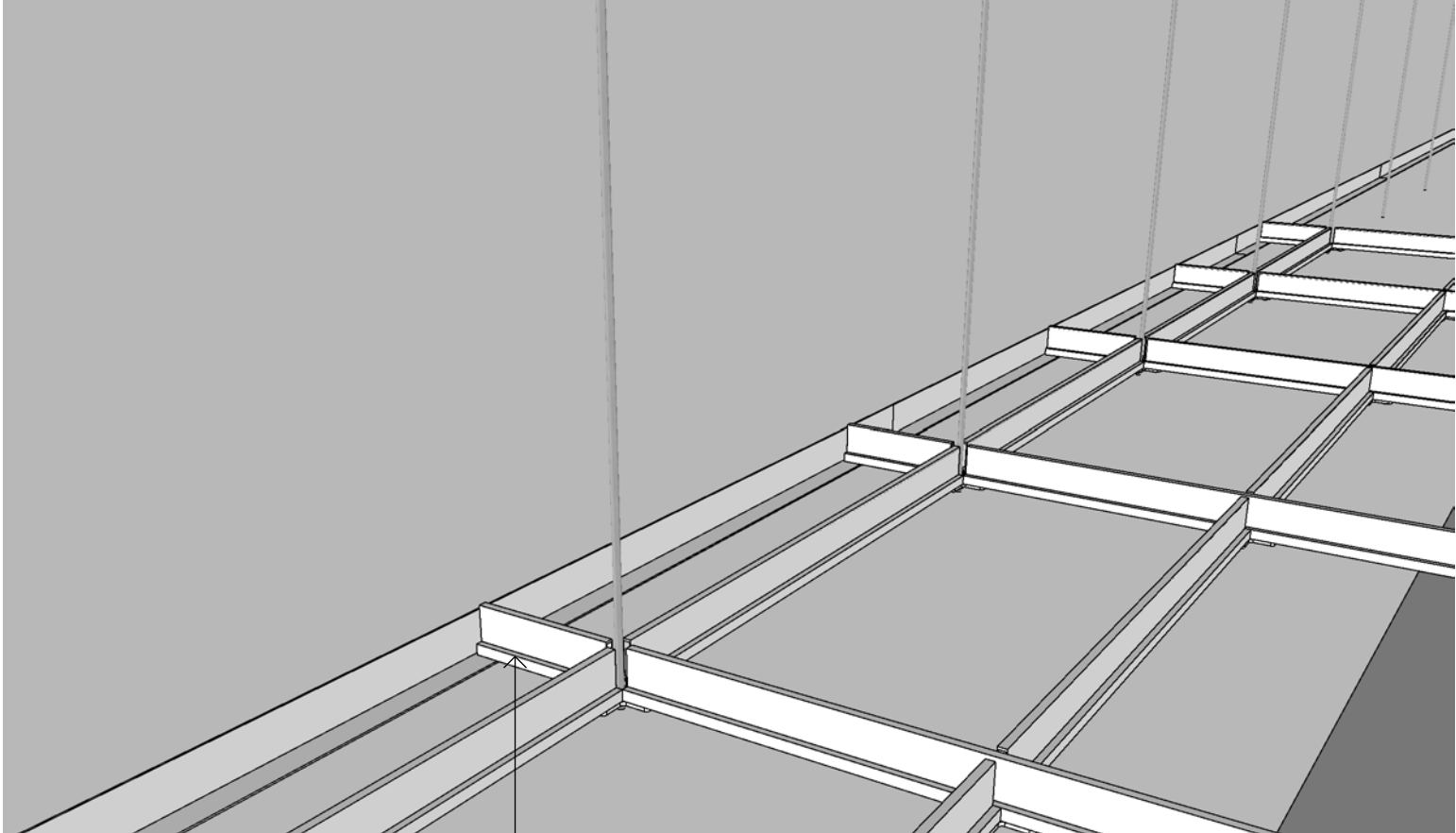


POLARGY

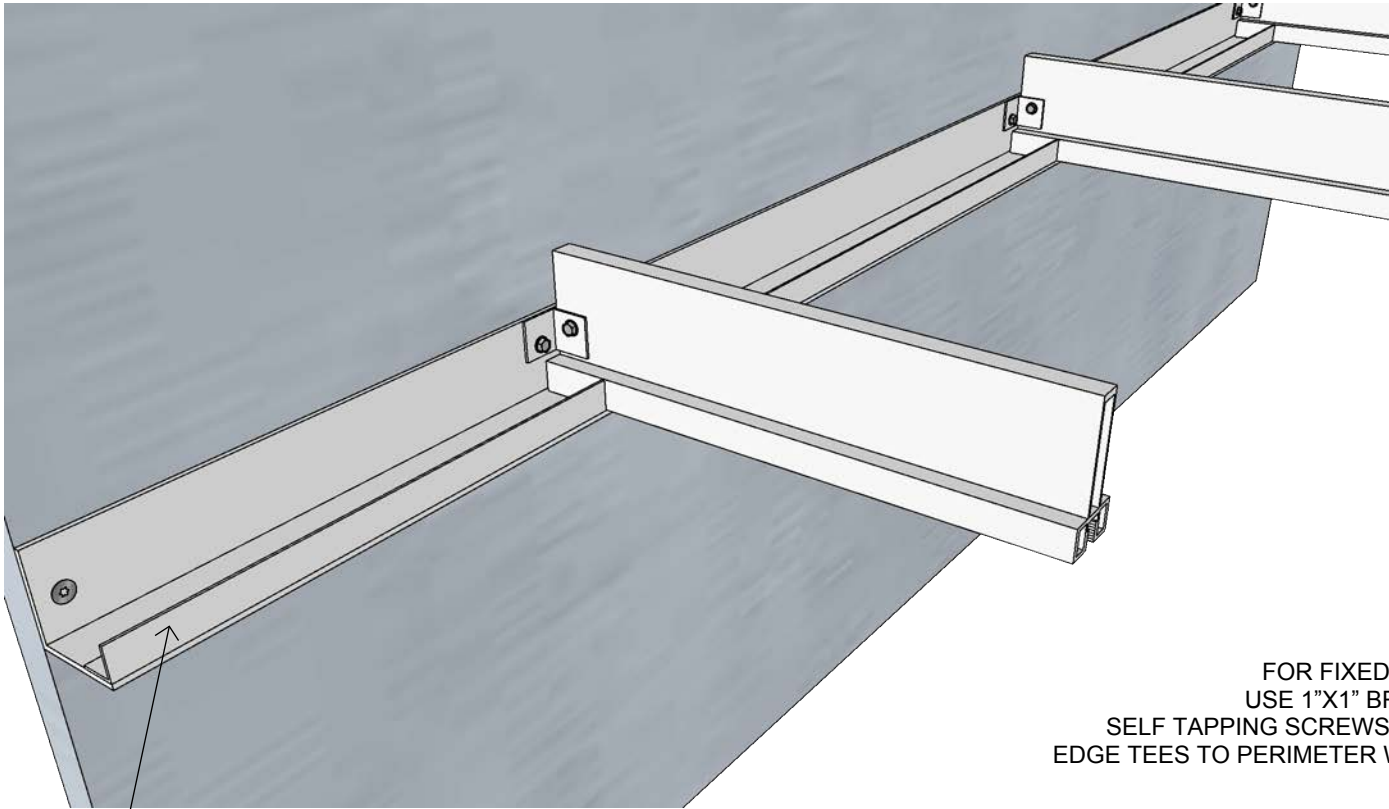
LAST MODIFIED
September 8, 2019

COMPANY
POLARGY, INC.
1148 Sonora Court
Sunnyvale, CA 94086

TITLE
**PICS
STRUCTURAL CEILING
INSTALLATION GUIDE**

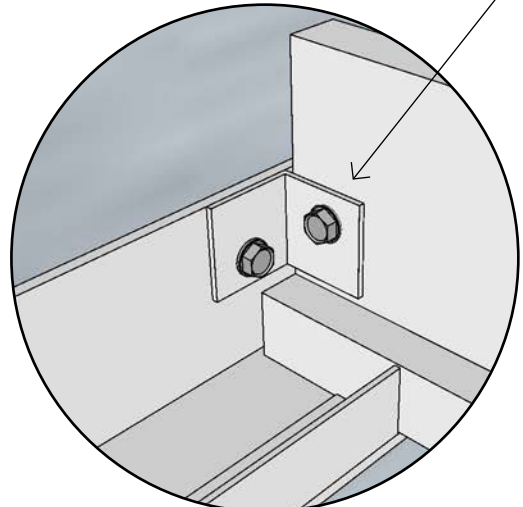


• ADD EDGE TEES, CUT TO WITHIN 0.25" OF EDGE



• INSTALL 0.75"X0.75" EDGE TRIM PIECES. THESE ARE CUT TO 22.44" AND 46.44" LENGTHS AND ARE PROVIDED WITH DOUBLE SIDED TAPE.

FOR FIXED PERIMETER USE 1"X1" BRACKET AND SELF TAPPING SCREWS TO SECURE EDGE TEES TO PERIMETER WALL ANGLE



LAST MODIFIED
September 8, 2019

COMPANY
POLARGY, INC.
1148 Sonora Court
Sunnyvale, CA 94086

TITLE
**PICS
STRUCTURAL CEILING
INSTALLATION GUIDE**