



PolarPlex™ Standard Panel

Installation Guide

Revision 1

Polargy, Inc.
256 Gibraltar Drive, Suite 106
Sunnyvale, CA 94089
888.816.8338
www.polargy.com



PolarPlex™ Standard Panel Installation Guide

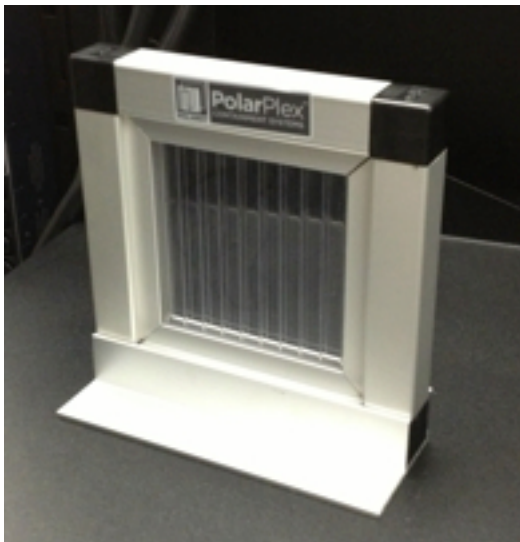
Standard Panels

The PolarPlex™ Standard Panels are a floor mounted or rack mounted vertical containment system.



Standard Panel Overview

The PolarPlex Standard Panels are aluminum framed panels with twin-wall inserts that mount to the floor or rack tops with an F-Channel on the bottom. Depending on the containment design and panel height, the panels may also be secured at the top with 3M Dual Lock to an existing supporting surface or to an aluminum piece mounted to the ceiling. The Standard Panels are all custom sized to the project.

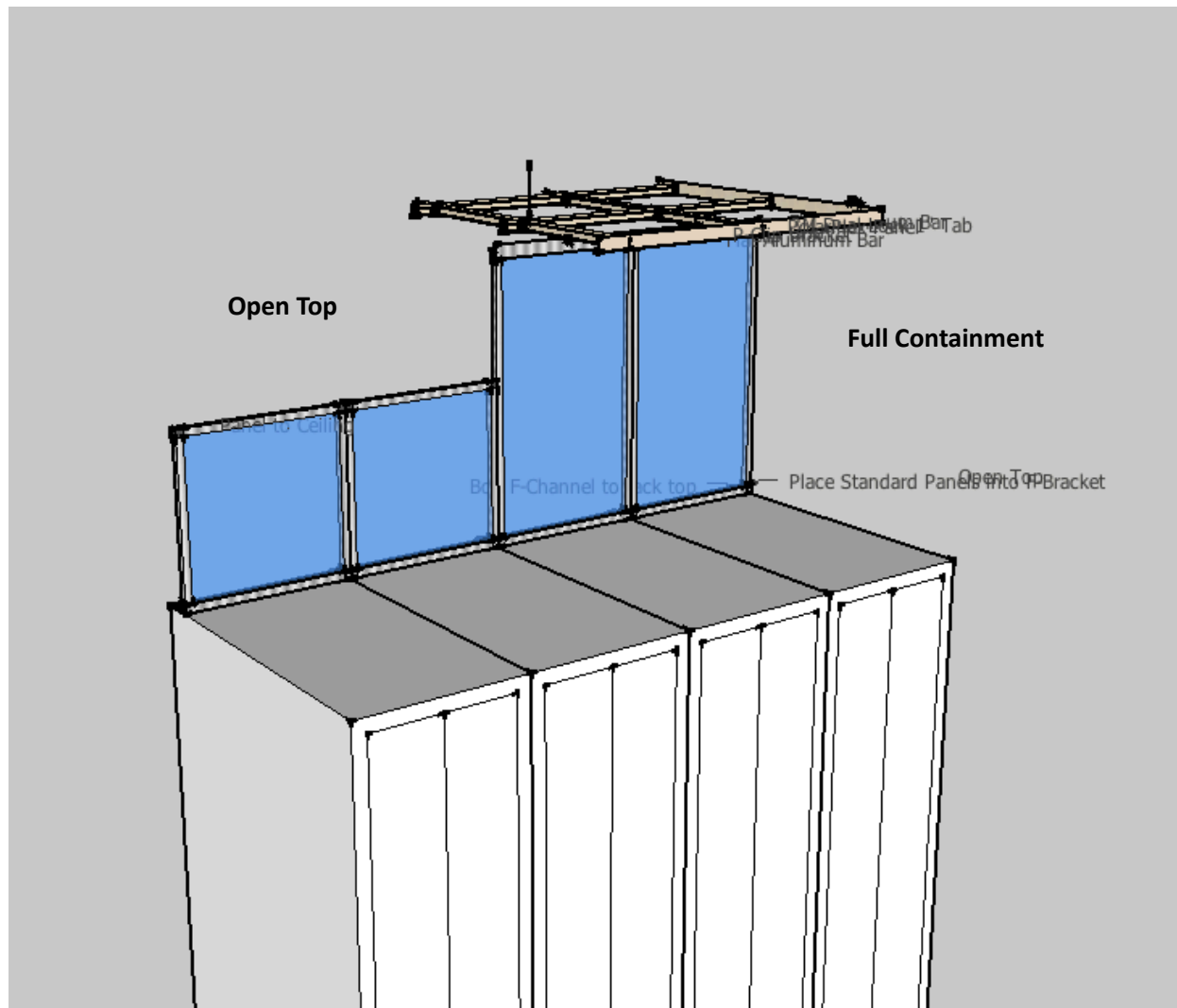




PolarPlex™ Standard Panel Installation Guide

Rack Top Mounting Options

1. Open Top Design - Panels are supported only at bottom
2. Full Containment - Panels are supported on bottom and at top with trim piece



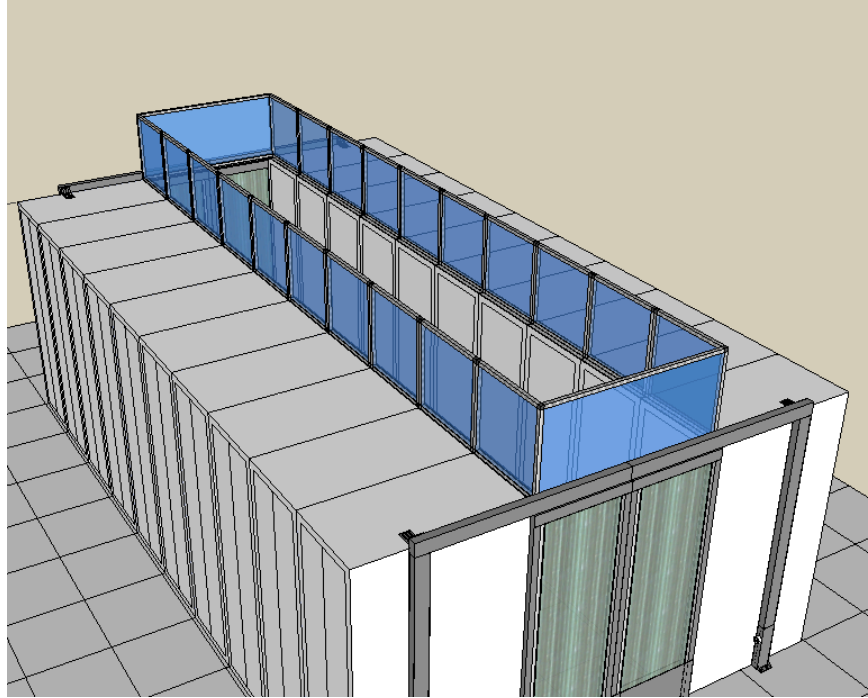
Rack Top Mounting Options



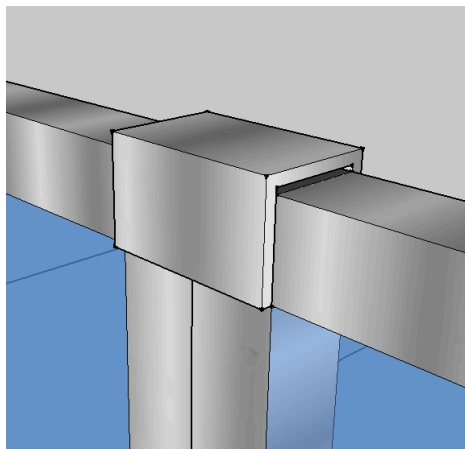
PolarPlex™ Standard Panel Installation Guide

Open Top Option

The Panels are attached with the F-Channel to the rack tops and not supported at the top. This “bottom only” design is good for panel heights of up to 42”. For taller panels a U-Alignment Clip is used at the panel joints. For shorter panels this clip is not necessary. The U-Alignment Clip just slips over the panel corners.



Open Top Design



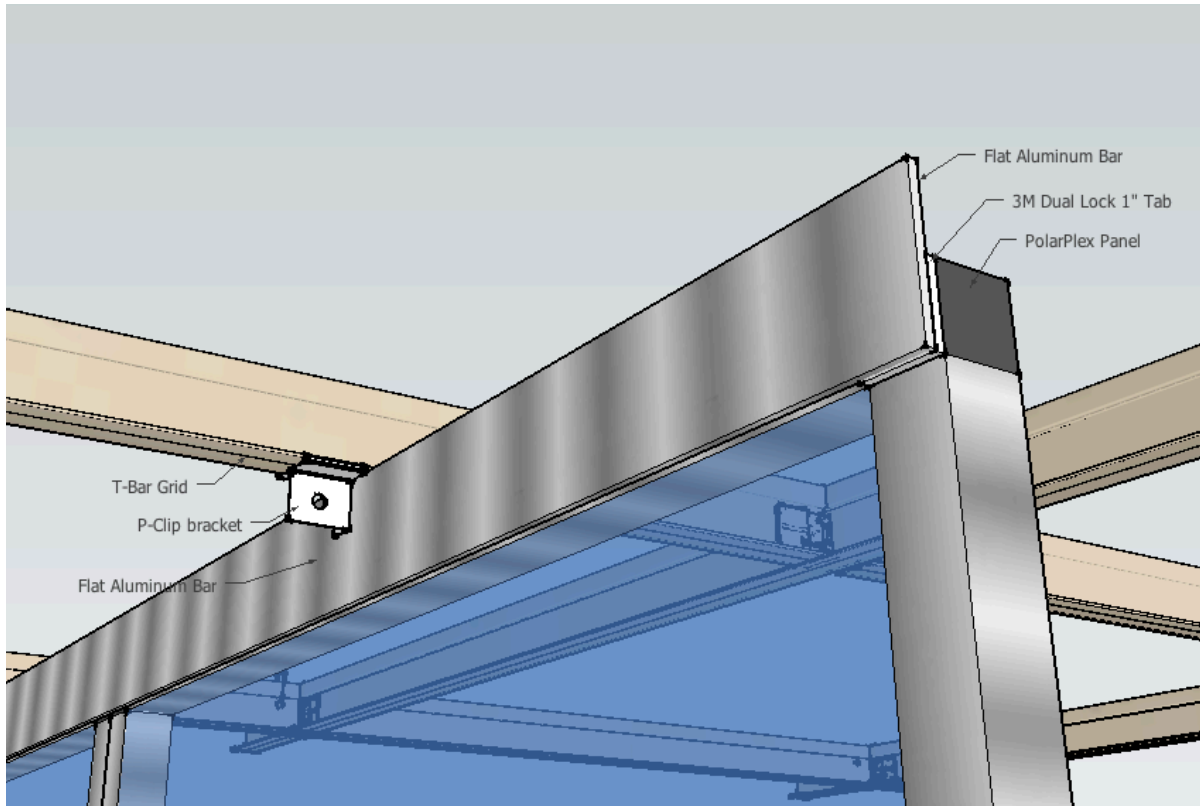
U-Alignment Clip



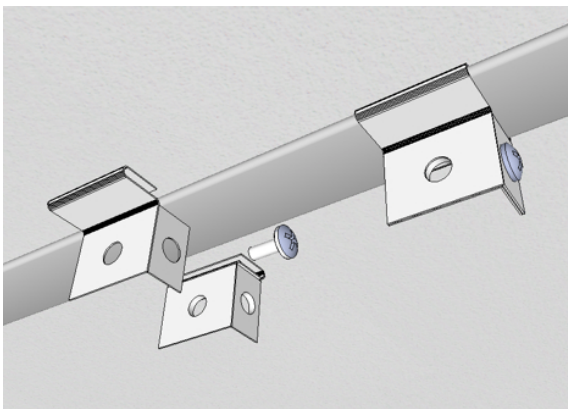
PolarPlex™ Standard Panel Installation Guide

Full Containment Option

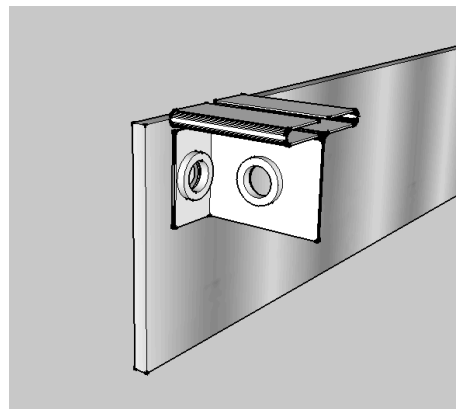
The Standard Panels are secured at the top for Full Containment with a ceiling mounted 2" aluminum trim bar and 3M Dual Lock (which is a Velcro like fastener).



Panel Attached to Ceiling



P-Clip Attaches to T-Bar



Aluminum Trim Bar Attaches to P-Clip



PolarPlex™ Standard Panel Installation Guide

Ordering the Standard Panels

Standard Panels - Priced and ordered by individual panel. Specify panel height and width.

F-Channel - Priced and ordered by Linear Feet. Typically delivered in 8' sections though specify exact cuts as needed.

Aluminum Trim Bar - Priced and ordered by Linear Feet. Typically delivered in 8' sections though specify exact cuts as needed.

2" U-Alignment Brackets - Order specific number of clips needed.

P-Clips - Order specific number of clips needed.

3M Dual Lock - Provided in bags of 10 1" pieces.